

# A New Forming System from Nox-Crete

A complete reusable precast formwork system



- 1 Titan™ Magnet Clamp
- 2 Spartan™ Sideform
- 3 Spartan™ Sideform Capping
- 4 Spartan™ Rubber Base Insert
- 5 Spartan™ End Caps
- 6 Spartan™ Joiner Plates
- 7 Spartan™ Internal Corner System

Smarter. Easier. Lightweight. Reusable. Safer.

Central to your SRB Systems is the Titan™ Magnet Clamp and Spartan™ Sideform. Together, these products provide unparalleled levels of accuracy, flexibility, efficiency and safety to precast plants.

**nox-crete®**

chemical solutions to **concrete** problems

**North American Distributor**

402-341-2080 | [www.nox-crete.com](http://www.nox-crete.com)

# 1 Titan™ Magnet Clamp

## MAGNET FEATURES



### Adjustable Handle

- Can be adjusted into 3 positions; engaged, semi-engaged and disengaged

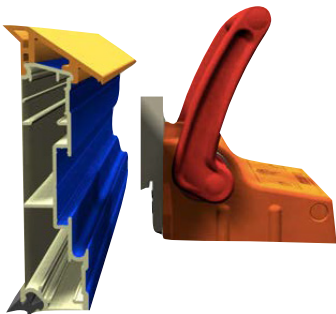
### Plastic Body

- Rubber and plastic housing greatly reduce movement from vibration
- Glass reinforced plastic adds strength and makes concrete hard to adhere to
- Alkalinity in concrete doesn't affect plastic

### Rubber Skirt

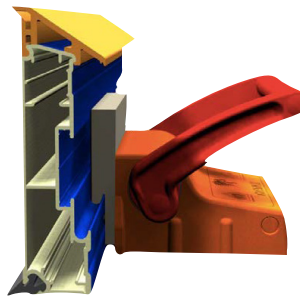
- Creates a barrier between the magnet and dirt, metallic particles and other foreign magnetic material
- Increases base friction forces holding the magnet in place

PULL DOWN FORCE	3968 lbs.
SHEAR FORCE LOAD	895 lbs. to 1,054 lbs.
UNIT WEIGHT	9.8 lbs.
DIMENSIONS	5.1" D x 5.9" W x 3" H



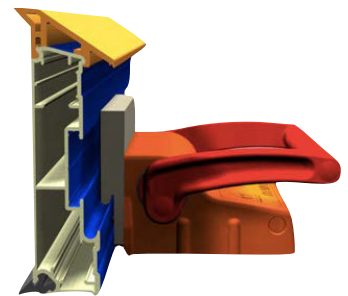
### Disengaged

Under the plastic housing the magnet is tilted away from the steel bed. Magnets can be moved on metallic surfaces and set in place with ease.



### Semi-Engaged

The magnet is nearly flat and flush with the base of the rubber skirt. Magnet holds its position but can be moved to its precise position along the sideform prior to pour without the use of a hammer or mallet.



### Fully Engaged

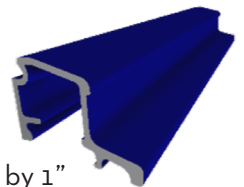
The magnet is in full contact with the steel forming bed. The full force of the SRB Titan™ is in affect and will not move until the handle is adjusted to the semi-engaged or disengaged position.



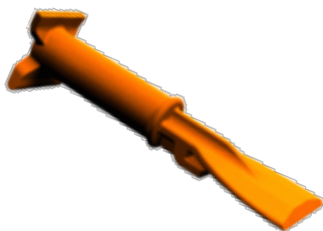
## SIDEFORMS AVAILABLE IN 6", 8", 10" & 12" HEIGHTS

With a wide variety of sideform heights, precast facilities have the versatility of providing the exact thickness their customers require.

### Spartan™ 1" Aluminum Sideform Extensions



- Increase Spartan Sideform heights by 1" making all heights available from 6" to 14" in 1/2" increments.
- Aluminium Extension snaps onto Spartan Sideforms
- Comes in 19.20' lengths



The Spartan™ Capping Removal Tool is a multi-purpose tool designed for the removal of capping, cleaning concrete from sideform and capping, and its unique ball lock rail base helps remove concrete build up. The Capping Removal Tool's molded ball lock rail base also helps pull sideform away from the finished concrete panel.

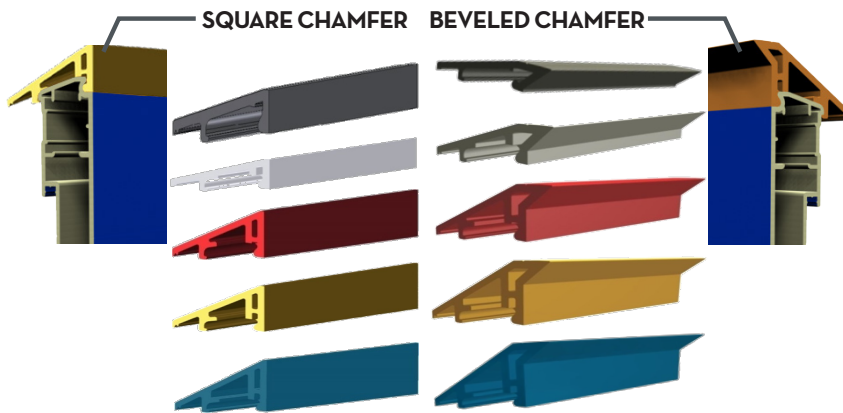
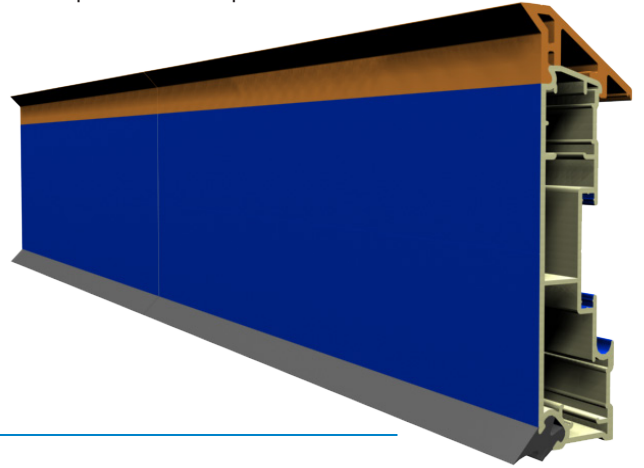


## 2 Spartan™ Sideform

### SIDEFORM FEATURES

- Epoxy powder-coated for easy cleaning
- Magnet securing rail securely holds sideform to magnet
- Available in color-coded 6", 8", 10" and 12" profiles and Standard 19.2 ft lengths.
- Significantly lighter than steel formwork reducing any potential occupational safety and health issues
- Thick wall sections - will not easily bend or buckle
- Add joiner plates to make any length
- Center line marking: Spartan™ Sideform provides a horizontal line-of-center to assist with alignment or positioning of fittings

Spartan™ Composite Sideforms are manufactured from ultra lightweight, high-grade 6082 and 6005A aluminum alloys which provides durability and strength. Sideforms consist of composite aluminum with interchangeable chamfer profiles on top and bottom.

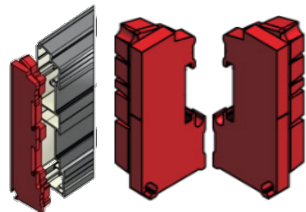
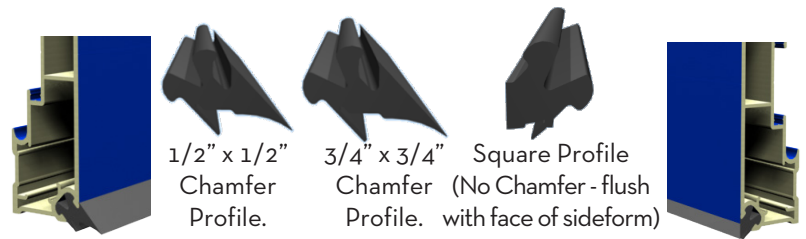


## 3 Spartan™ Sideform Capping

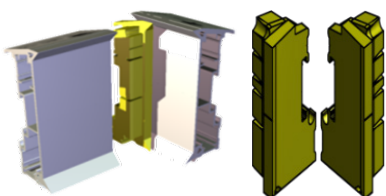
The Spartan Sideform Capping allows the flexibility to change sideform height by simply adding the appropriate side form caps. Caps are available in 1/2" and 1" height increments with 1/2" and 3/4" inch built-in chamfer. The PVC capping easily snaps on and off Spartan™ Sideform.

## 4 Spartan™ Rubber Base Insert

Provides a caulk-free seal between the bed and formwork to prevent concrete slurry bleed - eliminate the need for caulking and the material and labor costs associated with the silicone application and removal processes.



RED splayed rubber end caps for 6", 8", 10", 12" Spartan Sideform



YELLOW square rubber end caps for 6", 8", 10" and 12" Spartan Sideform

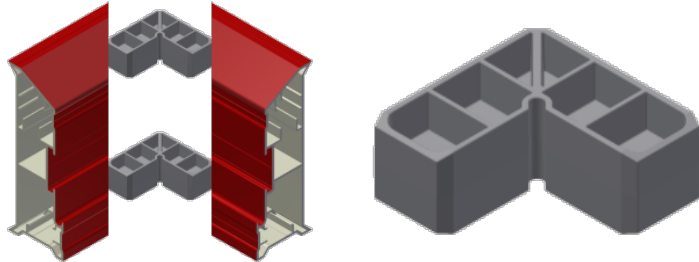
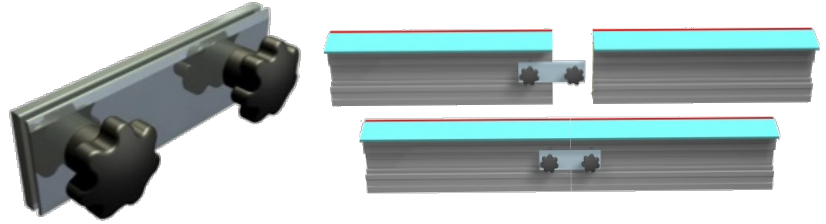
## 5 Spartan™ Sideform End Caps

RED Spartan™ End Caps provide a caulk-free joint between sideform sections, preventing concrete bleed through gaps in temporarily joined sideforms. These caps fit into the ends of the Spartan Sideform extrusion for sideform to sideform linear connections. Also for use in the ends of internal corner pieces fabricated for Spartan Sideforms. 5° splay helps to provide easy sideform separation during the formwork removal/stripping process.

YELLOW Spartan™ End Caps fit into the ends of the sideform extrusion for perpendicular (90 degree) sideform abutments to form external corners.

## 6 Spartan™ Joiner Plates

Spartan™ Joiner Plates are used to join sideform sections and used for joining Spartan Internal Corner systems. For 6" to 12" Spartan & Magniform Sideforms.



## 7 Spartan™ Internal Corner Brace

Made for 6" to 12" Spartan & Magniform Sideforms, two Internal Corner Braces are required for each corner unit. Internal corner brace fits into internal joiner guides in Spartan Sideforms to enable 2 sideform pieces cut at 45 degrees to be permanently joined to form an internal corner unit.

### OTHER ACCESSORIES

#### SRB Precast Workstation Trolley

Organize and store precast magnets & other precast equipment that are designed to be pushed to work location.

- Made to order
- Designed to carry 32 MX-1800 or Titan 4 Magnets on 1 side and a combination of 16 Sideforms on the opposite side
- Locking casters to enable simple and easy placement and removal of sideforms
- Push/pull handles on either side for simple maneuvering of Workstation Trolley to work area and back to storage
- Storage area at base for lift inserts / anchors, tools and other hardware required for production
- Supplied as flat pack - bolt assembly



#### Screw Fix Bracket

- Alternate formwork fixing method to magnets, and fixing method for FIXED-END Sideforms
- Bracket is screw fixed or bolted to casting table, wood or concrete casting surfaces
- Bolts Supplied



**SRBSYSTEMS**

New Technology for the Concrete Jungle

**Exclusive North American Distributor**

402-341-2080 | [www.nox-crete.com](http://www.nox-crete.com)

**nox-crete®**

chemical solutions to concrete problems