



chemical solutions to concrete problems

FLOORING



FLOORING CUSTOMERS WITH QUALITY

As performance demands on steel-troweled industrial floor slabs have increased, Nox-Crete's powerful flooring systems deliver results. These systems are tested to significantly increase resistance to abrasion, greatly increase surface life, and reduce long term maintenance costs.

As the concrete industry evolves, Nox-Crete remains at the leading edge of the industry providing high quality and innovative products.



PRODUCTS

PAGE

LIQUID FLOOR HARDENERS / DENSIFIERS AND COLOR DYES

Duro-Floor Classic System	3
Duro-Nox	3
Duro-Nox LS	3
Duro-Nox LSC	3
Duro-Polish	3
Duro-Polish Plus	4
Duro-Floor Color System	4
Duro-Color	4
Duro-Shield	4
Harbeton	4

SEMI-RIGID JOINT FILLERS

Clean Shave	5
Dynaflex JF-85	5
Dynaflex 502	5

CONCRETE FLOOR STRIPPER

Bio-Clean Plus	5
----------------------	---

SURFACE EVAPORATION REDUCERS

Monofilm	5
----------------	---

LOW BUILD FLOOR COATINGS

Dauerseal 30E	6
Dauerseal 60E	6

RESINOUS FLOORING / OVERLAYMENTS

DauergROUT E	7
Dauercast SQ	7
Dauercast DQ	7

APPLICATION EQUIPMENT

Microfiber Applicator	7
-----------------------------	---

NOX-CRETE HISTORY



CALL TODAY

**FOR A FREE ONSITE
DEMONSTRATION ON
ANY OF OUR FLOORING
PRODUCTS!**

(402) 341-2080



LIQUID FLOOR HARDENERS / DENSIFIERS AND COLOR DYES

DURO-FLOOR CLASSIC SYSTEM

Liquid Floor Hardener/Densifier, Ultra-High Gloss Polish and Stain Protectant System for Burnished and Diamond Polished Concrete Floors.

A two step system combining **Duro-Nox**, **Duro-Nox LS**, or **Duro-Nox LSC** silicate type densifiers and **Duro-Polish** or **Duro-Polish Plus** ultra-high gloss polish and stain protectant. Strengthens, dustproofs and increases the abrasion and impact resistance of burnished concrete warehouse and industrial distribution center floors. Depending upon the depth of grind, gives diamond polished concrete floors a marble-like appearance, salt and pepper-like appearance or an exposed aggregate terrazzo-like appearance. Designed for industrial, commercial, retail, office, sporting arena, convention center and institutional floors.

DURO-NOX

Traditional Silicate Type Liquid Floor Hardener, Sealer and Densifier

Original, high performance formulation hardens, seals, densifies and dustproofs new and existing concrete floors. Increases abrasion, impact and wear resistance. Develops a lustrous, marble-like sheen that continues to improve through regular use. 20-year performance warranty available.



DURO-FLOOR CLASSIC SYSTEM

DURO-NOX LS

Lithium Silicate Type Liquid Floor Hardener, Sealer and Densifier

High performance formulation hardens, seals, densifies and dustproofs new and existing concrete floors. Increases abrasion, impact and wear resistance. Does not require the costly and environmentally-damaging rinse removal step necessary with application of traditional silicate type liquid floor hardeners. Develops a lustrous, marble-like sheen that continues to improve through regular use. 20-year performance warranty available. An integral component of the **Duro-Floor Classic System**.

DURO-NOX LSC

Lithium Silicate Type Liquid Floor Hardener, Sealer and Densifier

Less reactive formulation economically hardens, seals, densifies and dustproofs new and existing concrete floors. Increases abrasion, impact and wear resistance. Does not require the costly and environmentally-damaging rinse removal step necessary with application of traditional silicate type liquid floor hardeners. Particularly well-suited for use on colored, dyed or stained concrete without causing white surface discoloration. Develops a lustrous, marble-like sheen that continues to improve through regular use. An integral component of the **Duro-Floor Classic** and **Duro-Floor Color Systems**.



DURO-NOX

LIQUID FLOOR HARDENERS / DENSIFIERS AND COLOR DYES

DURO-POLISH

Concentrated, Synthetic Polymer Floor Polish

Fast drying, water based formulation gives an immediate ultra-high gloss finish that requires no buffing. The finish is extremely durable and is both scuff and scratch resistant. For use on concrete floors previously treated with one of the **Duro-Nox** silicate type liquid floor hardeners. Meets the static coefficient of friction requirements of ASTM D 2047.

DURO-POLISH PLUS

Concentrated, Synthetic Polymer Floor Polish with Special Stain Blocking Additive

The same benefits of **Duro-Polish** with the added advantage of stain resistance. Provides stain protection from the most common stain-causing agents found in grocery stores, restaurants, warehouses and distribution centers. For use as a final finish and integral component of the **Duro-Floor Classic System**.

DURO-FLOOR COLOR SYSTEM

Diamond Polished Colored Concrete Floor System

A three part system that combines **Duro-Nox LSC** lithium silicate densifier, **Duro-Color** Concentrated dye and **Duro-Shield** floor polish, stain and fade protectant. Transforms plain gray colored interior concrete floors into beautiful brightly colored, high gloss, stain and slip resistant, polished concrete floors. Designed for commercial retail, office, sporting arena, convention center and institutional floors. Beautifies, strengthens, dustproofs and increases the abrasion and impact resistance of diamond polished concrete floors.



DURO-FLOOR COLOR SYSTEM

DURO-COLOR

Concentrated, Deep Penetrating Dye For Diamond Polished Concrete Floors

Available in 18 vibrant base colors that can be custom blended to achieve an unlimited number of colors options. Dilutes 1:7 with any VOC exempt solvent such as acetone, **Duro-Nox LSC** lithium silicate liquid floor hardener or water. Designed for use on diamond polished concrete floors as an integral component of the **Duro-Floor Color System**.

DURO-SHIELD

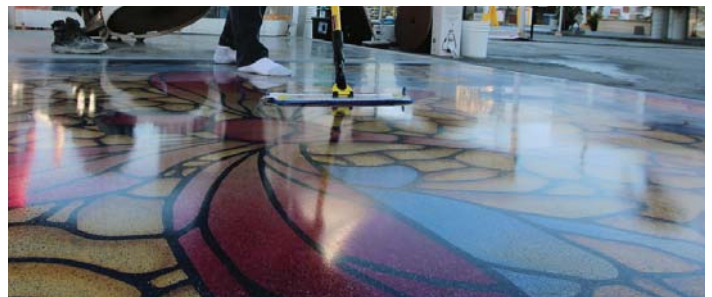
Concentrated, Synthetic Polymer Floor Polish With Special Stain Blocking Additives and UV Stabilizing Additives for Maximum Fade Resistance

The same ultra-high gloss finish, slip resistance and stain protection provided by **Duro-Polish Plus** with the additional advantage of containing a UV stabilizing additive. Designed specifically to protect **Duro-Color** dye from fading due to sun exposure through unprotected windows and doors. For use as a final finish and integral component of the **Duro-Floor Color System** for diamond polished concrete floors.

HARBETON

Fluorosilicate-based concrete floor hardener

Harbeton is a fluorosilicate-based hardener which chemically reacts with limes present in concrete resulting in a chemical reaction that hardens, densifies and dust proofs concrete floors. **Harbeton** is ideal for use in warehouses, distribution centers, auto dealerships, manufacturing plants, parking garages and bottling plants. Leaves no residual film and creates an improved surface for mechanical bonding.



DURO-SHIELD

SEMI-RIGID JOINT FILLERS

CLEAN SHAVE

Stain Blocking Film For Semi-Rigid Joint Filler Application

Water based, copolymer stain blocking film is both easy to apply and fast drying. Protects concrete from stains caused by joint filler overfill during joint filler application. Also facilitates the joint shaving process, helping to minimize chatter. Water soluble film is easily removed with water and light scrubbing once joint filler application has been completed.

DYNAFLEX JF-85

Polyurea Type, Semi-Rigid Concrete Floor Joint Filler

100% solids, self-leveling formulation is fast-setting and tack-free in less than 5 minutes. Protects industrial floor saw cut crack control joint edge shoulders from edge fractures. Combines high Shore Hardness (85A) with good elongation (500%). Can be used in cold applications down to -20 deg. F (-29 deg. C). For use in heavy duty service applications.

DYNAFLEX 502

Epoxy/Polyurethane Type, Semi-Rigid Concrete Floor Joint Filler

100% solids, moisture insensitive, semi-rigid epoxy and polyurethane copolymer formulation. Develops strength quickly by curing from the inside out. Protects industrial floor saw cut crack control joint edge shoulders from edge fractures. Flexibilized for resistance to thermal and shock related joint edge separation. For use in heavy duty to severe service applications requiring a minimum Shore Hardness of 80A.



CONCRETE FLOOR STRIPPER

BIO-CLEAN PLUS

Concentrated, Biodegradable, Citrus Based Concrete Floor Stripper

Powerful, water dilutable stripper that deeply penetrates concrete floor surfaces to safely and effectively remove most curing compounds, bondbreakers, paints, coatings, oil, grease, dirt, black tire marks and other residue. Dilutes up to 1:5 with water for most applications. Spent rinse is disposable in most sanitary sewer systems.



SURFACE EVAPORATION REDUCERS

MONOFILM

Concentrated Moisture Evaporation Reducer

Extends the time available for concrete finishing during hot/dry/windy conditions. Reduces surface moisture evaporation on freshly placed concrete up to 80% in wind and 40% in sunlight. Reduces surface crusting, shrinkage cracking and the development of moisture envelopes that lead to spalling. Also available in a ready-to-use formulation.



LOW BUILD FLOOR COATINGS

DAUERSEAL 30E

Low Build, Transparent, Epoxy Coating and Sealer

Water based, self-priming no odor formulation. Creates a smooth, medium gloss coating that improves the appearance, chemical and stain resistance of interior concrete floors while also increasing light reflectivity. Coating is both tough and durable with excellent water vapor permeability properties to prevent blistering.



DAUERSEAL 30E

DAUERSEAL 60E

Low Build, Pigmented, Epoxy Coating and Sealer

Water based, self-priming no odor formulation. Creates a smooth, medium gloss coating that adds color to concrete floors while improving the appearance, chemical and stain resistance and also increasing light reflectivity. Coating is both tough and durable with excellent water vapor permeability properties to prevent blistering.



DAUERSEAL 60E

RESINOUS FLOORING / OVERLAYMENTS

DAUERGROUT E

Epoxy/Polyurethane Copolymer, Trowel Applied, Seamless Patch and Overlay Flooring System

Extremely tough, high strength, chemical and abrasion resistant formulation. Three Component trowel applied system can be used to patch, re-profile or overlay concrete floor surfaces. Commonly used in food preparation, health and animal care, bathrooms, locker rooms and in institutional applications. Meets USDA and FDA requirements.

DAUERCAST SQ

Seamless Pigmented Epoxy Resin and Graded Broadcast Sand Aggregate Flooring System

Produces a seamless, high-impact flooring system with an integral cove base. Includes the broadcast application of a graded sand aggregate with an epoxy resin binder and pigmented top coat. Provides excellent chemical, abrasion and slip resistance with a uniform decorative appearance.



DAUERCAST SQ

DAUERCAST DQ

Seamless Transparent Epoxy Resin and Ceramic Colored Decorative Quartz Broadcast Aggregate Flooring System

Produces a seamless, high-impact flooring system with an integral cove base. Includes the broadcast application of a ceramic-coated decorative quartz aggregate with a transparent, epoxy resin binder and top coat. Provides excellent chemical, abrasion and slip resistance with a customized decorative appearance.



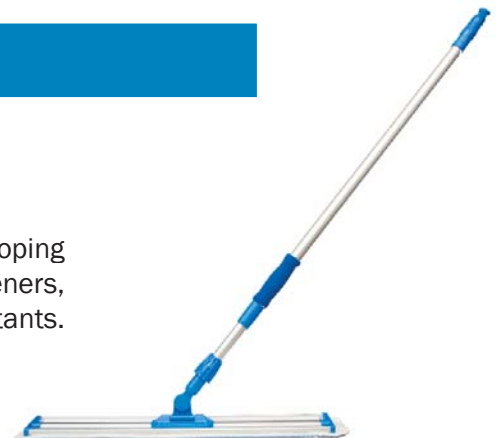
DAUERCAST DQ

APPLICATION EQUIPMENT

MICROFIBER APPLICATOR

Flooring Product Applicator

A heavy duty, commercial microfiber applicator, aluminum frame with telescoping poll. Used to even out spray applications of Duro-Nox liquid floor hardeners, Duro-Polish, Duro-Polish Plus and Duro-Shield floor polishes and protectants. Microfiber pads are available in 24 inch(61cm) and 36 inch (91cm) sizes.



FLOORING

HISTORY



CARL LINN IN THE LABORATORY



DEACTIVATOR • FORM COATING

THE CONCRETE CHALLENGE

In 1956, while working for Standard Oil Company, chemist Carl Linn observed contractors using the company's oil and grease compounds to prevent concrete from bonding to forms. Not only were the compounds difficult to work with, but the concrete was discolored and unpaintable. Forms failed after just a few pours. Concrete workers struggled with these issues for years, but Linn had an idea.

OUR CHEMICAL SOLUTIONS

Carl developed a chemically active release agent, Nox-Crete Form Coating, and a chemically active form maintenance product, Deactivator. With Nox-Crete Form Coating, contractors produced considerably better looking concrete and got longer life from their wood forms.

With Deactivator, concrete buildup was safely and easily removed from tools and equipment. And so, Nox-Crete's passion for solving concrete professionals' challenges was born.



chemical solutions to concrete problems



STILL INNOVATING WORLDWIDE

Today, Nox-Crete continues to manufacture chemical solutions to concrete problems. While still manufacturing the original Nox-Crete Form Coating and Deactivator, we have expanded our product line to include over 100 different products spanning six different market segments that are sold through a worldwide network of distributors and dealers.

Following Carl Linn's example, we continue to rely on concrete contractors for new product ideas. Our chemists and engineers examine field problems and develop solutions in our laboratory.

This passion for innovation is found in the quality and performance of all Nox-Crete products.

CONCRETE MARKETS WE SERVE

- Application Equipment
- Bonding Agents and Cementitious
- Curing
- Decorative
- Equipment/ Maintenance
- OEM
- Flooring
- Forming
- Precast
- Tilt-Up
- Water Repellents