



nox-crete®

chemical solutions to concrete problems

QUICK-FIX™

**HIGH STRENGTH, FAST-SETTING, POLYUREA BASED,
CONCRETE FLOOR SURFACE REPAIR SYSTEM**

Rapidly repair surface defects in concrete floors such as divots, fastener holes, gouges, cracks and spalls

Benefits:

- Open to Traffic in 60 Min.
- Easy-to-Use 1:1 Mix Ratio
- Long Pot Life - 4 Minutes
- 10x Stronger than Concrete
- Fast-Setting
- Can be Tinted to Match Color

Packaging Sizes:

- 0.5 Gallon Kit
- 2 Gallon Kit
- 10 Gallon Kit

www.nox-crete.com

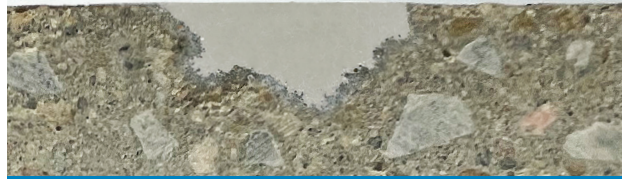
HOW IT WORKS

QUICK-FIX is a transparent, high-performance, polymeric concrete floor repair product designed to quickly and permanently repair/patch floor surface defects, divots, fastener holes, gouges, cracks and spalls. QUICK-FIX can also be mixed with silica sand, silica flour or fumed silica to repair joint nosing or deep floor surface damage. Quick-Fix can be tinted with Nox-Crete's Neptune Gray Color Tint Pak, or mixed with Portland cement, ground up concrete, organic dyes or shake-on color pigments to achieve improved color match to existing concrete floor surfaces. QUICK-FIX can be easily applied by a mix-and-pour method or with a steel trowel, or flat bladed squeegee. Patched floor surfaces can be shaved level with a sharp razor blade scraper or ground smooth with a sander, grinder or polisher to achieve nearly undetectable repairs.

Before



After



Keep Concrete Floors in the Mix with Quick-Fix!

ADVANTAGES:

- Specifically formulated to withstand heavy forklift and pedestrian foot traffic in industrial warehouse and retail concrete
- Can be used to repair both minor floor surface imperfections as well as deeper damage/defects such as spalls or pop-outs
- Can be blended with silica flour, fumed silica or sand aggregates to make a slurry or trowelable mortar
- Can be used neat to fill pinholes or other surface imperfections in polished concrete floor applications
- High strength - up to 10 times stronger than concrete
- 1:1 mix ratio is easy to measure and easy to mix
- Can be easily tinted with pigments, dyes, Portland cement or concrete grindings for improved color matching
- Low viscosity, self-leveling formulation is easy to apply
- Extended working time (pot life – 4 mins) allows plenty of time to place and finish
- Can be shaved level with razor blade scraper, sanded, ground or diamond polished to achieve smooth transitions
- Open to traffic in a less than 60 minutes
- Low odor – can be safely used in food storage facilities
- Low temperature cure allows it to be used in refrigerated and freezer applications
- Compliant with current USDA requirements for incidental food contact
- Green Engineered® – Contains no solvent and has zero VOC which is better for health and the environment



IDEAL USES

- EVENT CENTERS • SPORTING COMPLEXES • DISTRIBUTION CENTERS • RESTAURANTS • BOTTLING PLANTS
- COLD STORAGE FACILITIES • DAIRIES • LARGE RETAIL CENTERS • OFFICE COMPLEXES
- BREWERIES • MEAT PACKING PLANTS • LIVESTOCK FACILITIES • MANUFACTURING FACILITIES

