

SCHEMATICS & PARTS LIST

Ultimate Concrete Form Sprayer



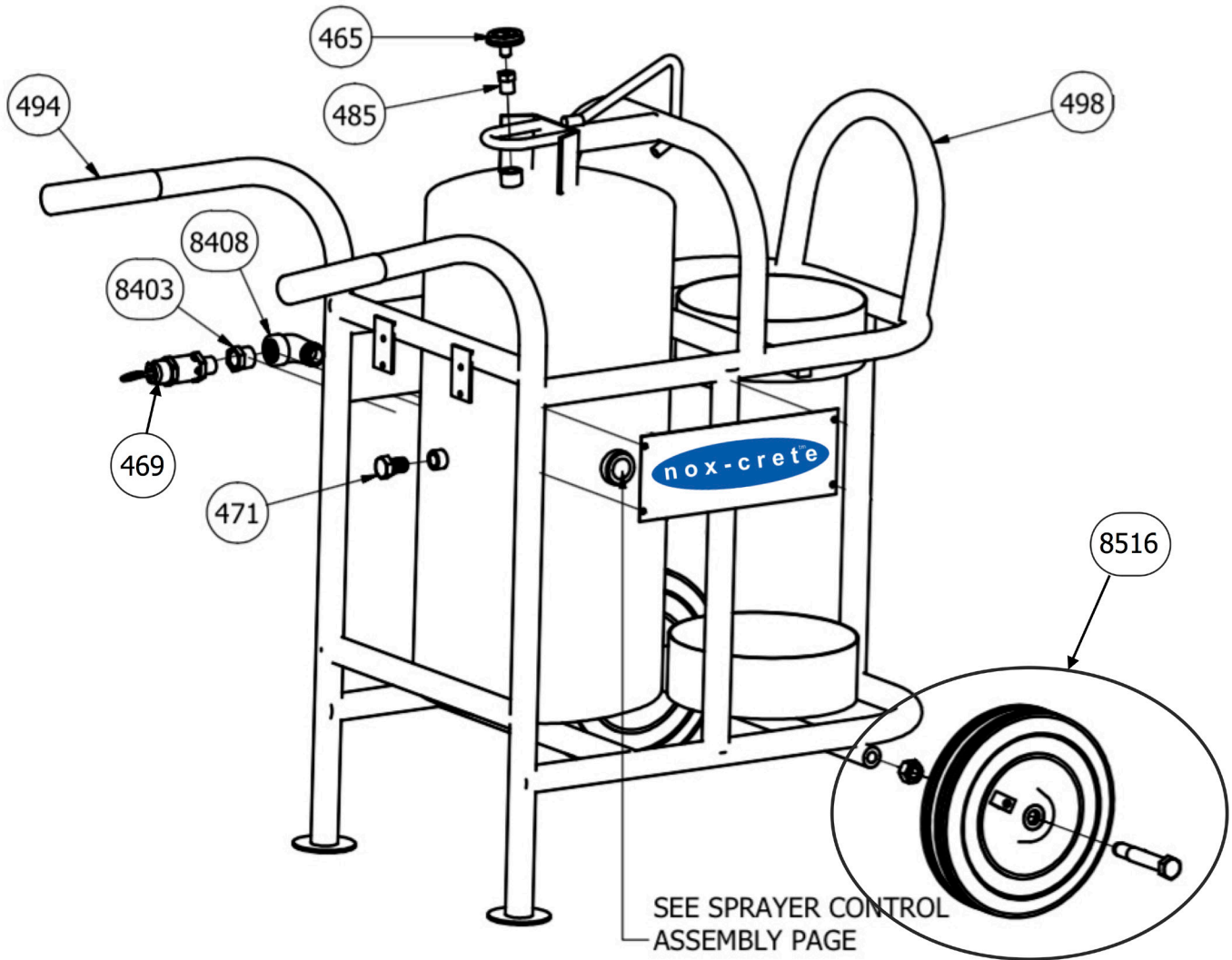
SCHEMATICS & PARTS LIST Ultimate Concrete Form Sprayer - Frame Assembly

Part # Product Description

465	1/8" PRESSURE GAUGE
469	150 PSI PRESSURE RELIEF VALVE
471	BRASS HEX NUT PLUG
485	BRASS BRUSHING 3/8"x1/8"
494	HANDLE GRIPS

Part # Product Description

498	SPRAYER FRAME WITH 2-1/4" AIR BARS
8403	3/4"x1/2" BUSHING
8408	3/4" STRET ELBOW
8516	WHEEL ASSEMBLY



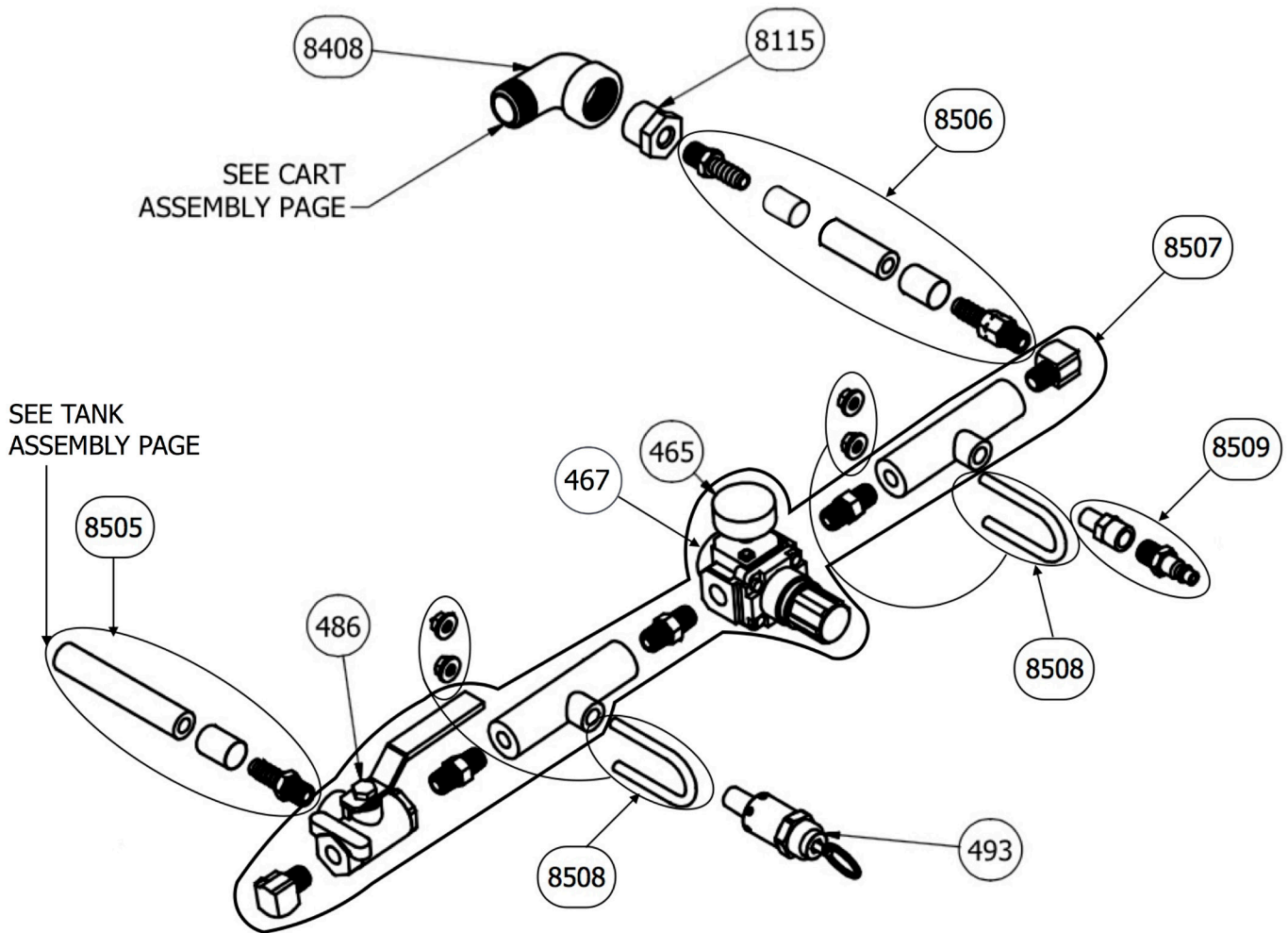
SCHEMATICS & PARTS LIST Ultimate Concrete Form Sprayer - Sprayer Control Assembly

Part # Product Description

465	1/8" PRESSURE GAUGE
467	AIR REGULATOR
486	3 WAY BRASS BALL VALVE 1/4"
493	1/4" 100 PSI SAFTEY VALVE
8115	3/4"x1/4" BRASS BUSHING
8408	3/4" STREET ELBOW

Part # Product Description

8505	AIR HEADER TO LIQUID TANK HOSE ASSEMBLY
8506	AIR TANK TO AIR HEADER ASSEMBLY
8507	AIR HEADER ASSEMBLY
8508	U-BOLT AIR HEADER AFASTENER ASSEMBLY
8509	ULTIMATE AIR FILL ASSEMBLY



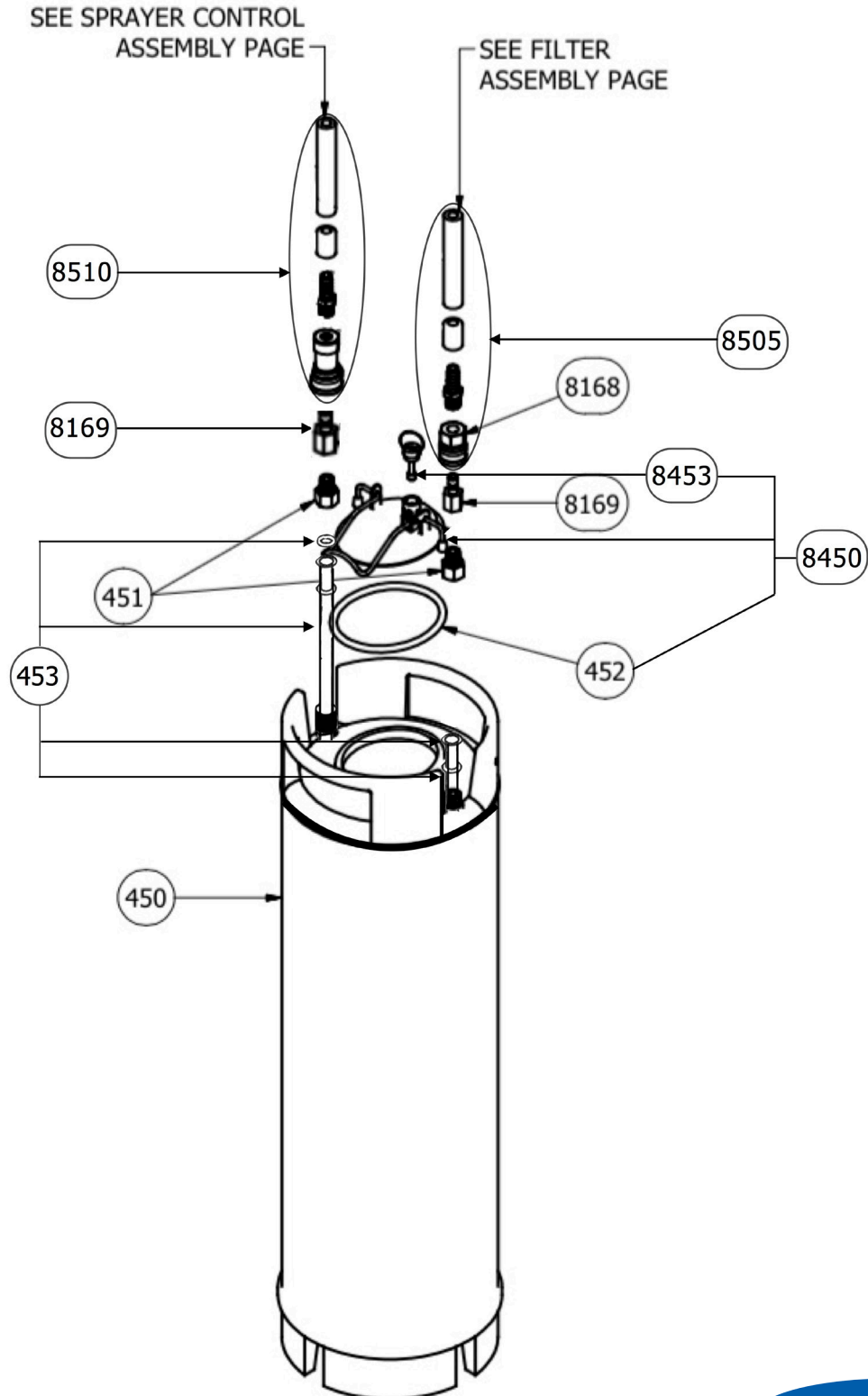
SCHEMATICS & PARTS LIST Ultimate Concrete Form Sprayer - Tank Assembly

Part # Product Description

450	5 GALLON KEG TANK
451	TANK CONVERSION FITTING
452	LARGE VITON O RING (3.5" ID) 9464K7
453	INLET/OUTLET SEAL
899	ULTIMATE CONCRETE SPRAYER TANK/FITTING
8142	1/4" FPT QC BRASS PLUG

Part # Product Description

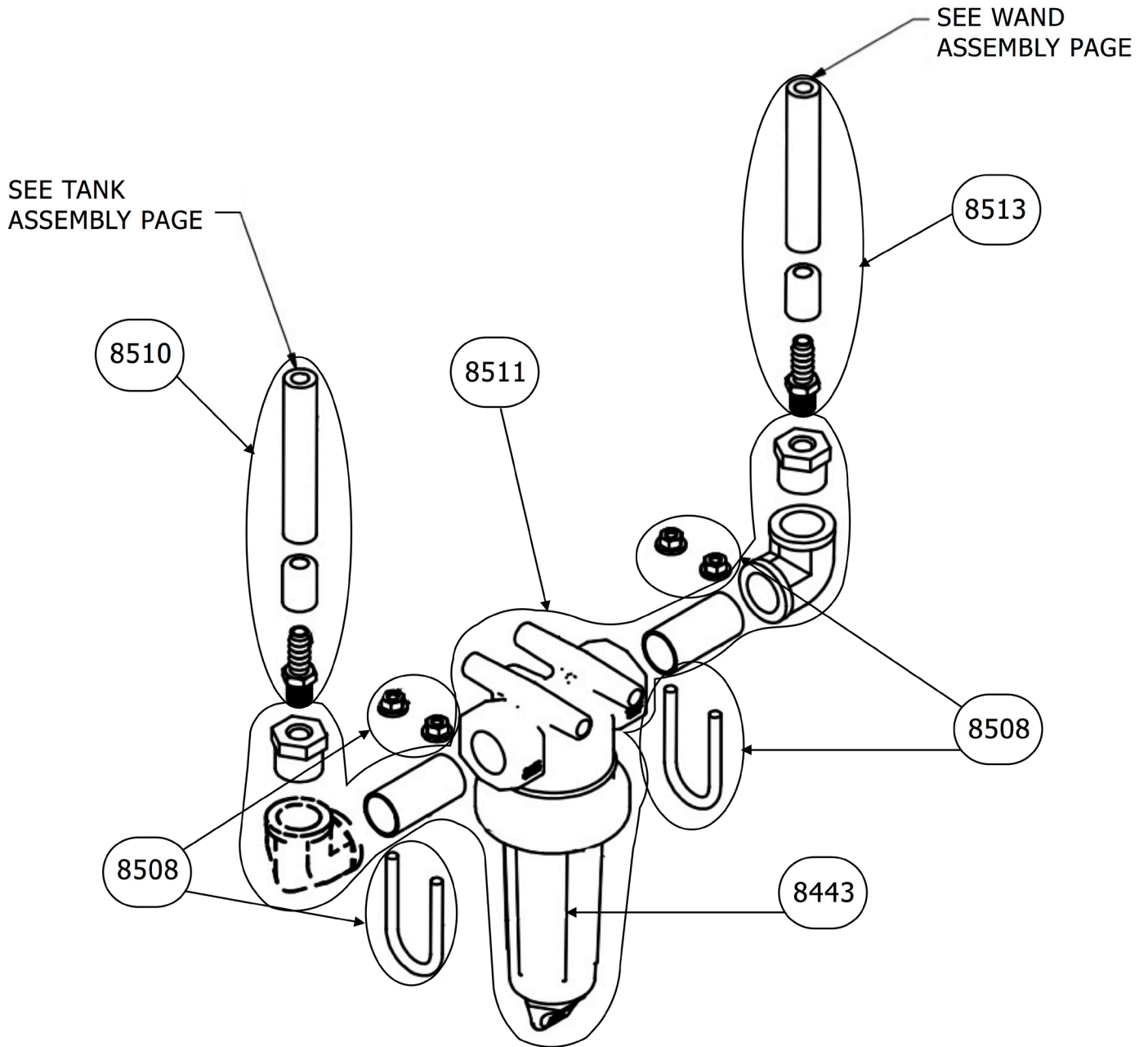
8168	1/4" FPT SEALING QC COUPLER
8169	1/4" FPT SEALING QC PLUG (BRASS)
8450	TANK LID WITH RELIEF VALVE & VITON SEAL
8453	120 PSI RELIEF VALVE WITH VITON SEAL
8505	AIR HEADER TO LIQUID TANK HOSE ASSEMBLY
8510	LIQUID TANK TO LIQUID FILTER HOSE ASSEMBLY



SCHEMATICS & PARTS LIST Ultimate Concrete Form Sprayer - Filter Assembly

Part # Product Description

8443	200 MESH FILTER SCREEN (NOT ILLUSTRATED)
8508	U-BOLT AIR HEADER FASTENER ASSEMBLY
8510	LIQUID TANK TO LIQUID FILTER HOSE ASSEMBLY
8511	LIQUID FILTER ASSEMBLY
8513	ULTIMATE HOSE ASSEMBLY



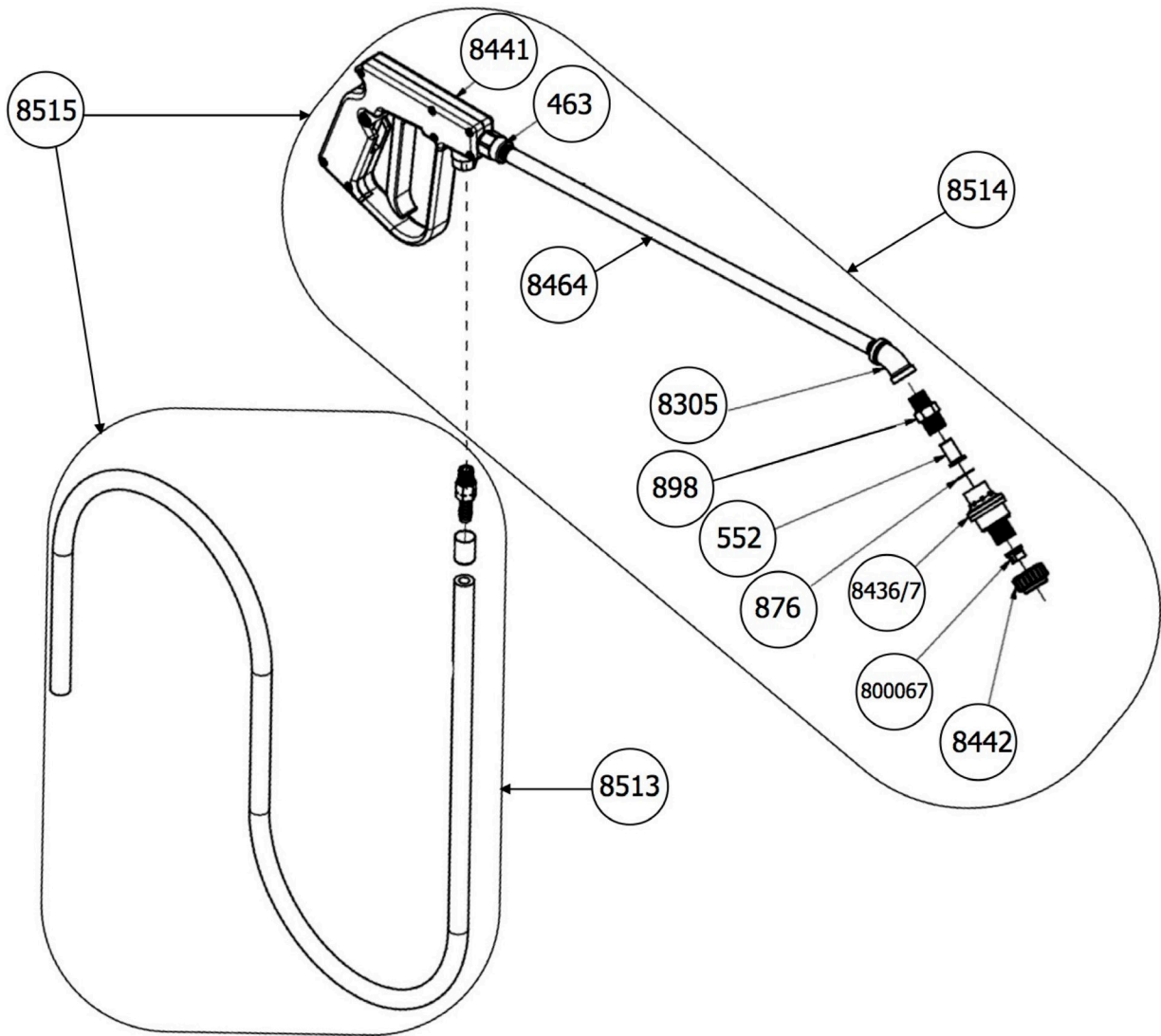
SCHEMATICS & PARTS LIST Ultimate Concrete Form Sprayer - Hose & Wand Assembly

Part # Product Description

463	TEE JET ADAPTER BRASS
552	100 MESH WAND FILTER
876	NYLAN TIP GASKET
898	MALE NOZZLE BODY ADAPTER
8305	45 DEGREE STEEL ELBOW
8436	CF VALVE GREEN & BLUE
8437	CF VALVE RED & YELLOW

Part # Product Description

8441	PISTOL GRIL SHUTOFF
8442	PLASTIC RETAINER CAP
8464	18" STAINLESS STEEL WAND
8513	ULTIMATE HOSE ASSEMBLY
8514	ULTIMATE SHUTOFF/WAND ASSEMBLY
8515	ULTIMATE HOSE/SHUTOFF/WAND ASSEMBLY
800067	8000067 SPRAY TIP



Use Instructions

- For product and air fill instructions, refer to the Ultimate Concrete Form Sprayer Quick Start Guide.
- For specific product information, refer to the Product Data Sheet.
- Spray tips may vary depending on product. Refer to Spray Tip Recommendation Guide.
- Use the 40 PSI valve in temperatures above 50°F (10°C).
- Use the 60 PSI valve in temperatures below 50°F (10°C).

Maintenance Instructions

- Empty contents of sprayer at the end of each day and leave clean with the appropriate cleaning solutions. Leave lid loose on clean sprayer to allow tank to air dry.
- If sponge bronze liquid filter becomes plugged, remove filter and wash out with solvent.

Notice to Users

- This sprayer is designed for Nox-Crete products only.
- This sprayer is designed only for use in exterior applications.
- Improper use or failure to follow instructions can result in explosive failure with potentially serious injuries. For safe use of product, you must read and follow all instructions before use
- Do not leave pressurized sprayer unattended in the hot sun. Heat can cause pressure buildup
- Do not store chemicals in sprayer. Empty and clean sprayer after each use.
- Always wear goggles, rubber gloves, rubber boots, and protective clothing when spraying. If air concentrations exceed the OSHA established TLV for chemical being sprayed, suitable respiratory protection is required.

- Never use any tool to remove lid if there is pressure in the sprayer.
- Do not attempt to modify or repair this sprayer except with original manufacturer's parts.
- Routinely inspect sprayer before each use for signs of wear or damage.
- Replace worn or damaged parts before use.
- When filling tank with compressed air, always observe the pressure gauge to ensure the maximum spraying pressure is not exceeded.
- When pressurizing the sprayer, hold the sprayer off to the side. Do not stand with your head or body directly over the sprayer.
- **DO NOT PRESSURIZE OVER 120 PSI.**

Warranty

NOTICE-READ CAREFULLY

CONDITIONS OF SALE

NOX-CRETE offers this product for sale subject to, and Buyer and all users are deemed to have accepted, the following conditions of sale and limited warranty which may only be varied by written agreement of a duly authorized corporate officer of NOX-CRETE. No other representative of or for NOX-CRETE is authorized to grant any warranty or to waive limitation of liability set forth below.

WARRANTY LIMITATION

NOX-CRETE warrants this product to be free of manufacturing defects. If the product when purchased was defective and was within use period indicated on container or carton, when used, NOX-CRETE will replace the defective product with new product without charge to the purchaser.

NOX-CRETE makes NO OTHER WARRANTY, either express or implied, concerning this product. There is NO WARRANTY OF MERCHANTABILITY. In no case shall NOX-CRETE be liable for special, indirect or consequential damages resulting from the use or handling of the product, and no claim of any kind shall be greater in amount than the purchase price of the product in respect of which damages are claimed.

INHERENT RISKS

NOX-CRETE MAKES NO WARRANTY WITH RESPECT TO THE PERFORMANCE OF THE PRODUCT AFTER IT IS APPLIED BY THE PURCHASER, AND PURCHASER ASSUMES ALL RISKS ASSOCIATED WITH THE USE OR APPLICATION OF THE PRODUCT.

Contact Us

customerservice@nox-crete.com

800-669-2738

402-341-2080

DO NOT USE WITH FLAMMABLE PRODUCTS