



chemical solutions to concrete problems



BOLD LOOK
SUSTAINABLE
FLOORING

DURO-FLOOR™ **COLOR SYSTEM**

FOR POLISHED CONCRETE FLOORS

Add long-lasting, deep rich color to interior concrete floors with the Duro-Floor Color System. Designed specifically for use on diamond polished concrete floors, the *Duro-Floor Color System* combines deep penetrating dyes, a silicate based liquid floor hardener/densifier and a gloss enhancing polish and stain protectant that transforms plain gray concrete floors into a sustainable, decorative flooring system with low environmental impact.

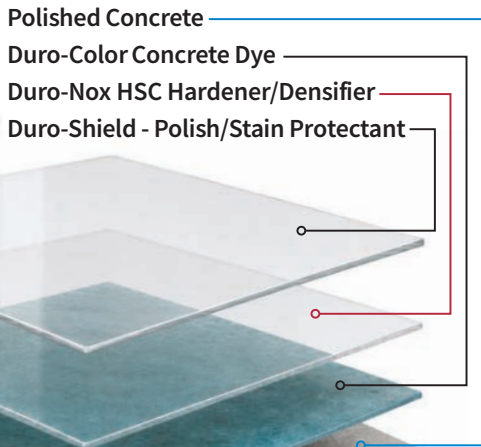


402-341-2080

www.nox-crete.com

The System

The **Duro-Floor Color System™** is a complete end-to-end concrete flooring system with everything necessary to create beautiful decorative concrete floors. The system includes **Duro-Color™** dye concentrate, **Duro-Nox® HSC** liquid floor hardener/densifier and **Duro-Shield™** gloss enhancing polish and stain protectant.



This 3-part system is designed exclusively for use on diamond polished concrete floors.

- Designed as a sustainable flooring system with reduced environmental impact compared to other flooring systems
- Produces vibrant colored floors with a high gloss finish
- Greatly enhances the appearance of traditional concrete floors
- Produces tough, abrasion resistant floors with improved durability
- Less up-front cost compared to alternative flooring systems, such as tile or carpet
- Low maintenance and replacement costs
- Built-in UV fade resistance and stain protection
- Safe-to-use, water-based, low VOC and low odor
- Helps projects qualify for LEED® certification

The Duro-Floor Color System is ideal for:

- Sporting Arenas
- Institutional Buildings
- Convention Centers
- Restaurants
- Grocery Stores
- Auto Dealerships
- Retail Centers
- Showcase Garages
- Office Complexes
- Tech Centers
- Schools
- Residential Homes



Achieve a Stunning Concrete Floor with this Simple 3-Part System

Concentrated Concrete Floor Dye

1

Duro-Color - Reactive Dye Concentrate

Made of ultra-fine nanoparticles and combined with a polar solvent system and surfactants engineered to deeply penetrate concrete micropores and capillaries to provide deep rich color to diamond polished floors.

+

2

Liquid Floor Hardener/Densifiers

Duro-Nox HSC - Hybrid Silicate

Liquid floor hardener/densifier chemically reacts with calcium hydroxide (lime) in concrete to produce water insoluble calcium silicate hydrate gels that fill surface pores to densify, harden, seal and protect diamond polished concrete floors.

+

3

Floor Polish and Protectant

Duro-Shield - Gloss Enhancing Floor Polish and Stain Protectant

Contains an ultra-high gloss, abrasion resistant resin with built-in slip resistant, UV fade resistant and stain blocking additives in a single product that is applied as the final step in the **Duro-Floor Color System**.

1 Concentrated Concrete Floor Dye

Duro-Color is a concentrated dye that can be diluted up to 1:7 with Nox-Crete Solvent F (acetone) for deepest penetration, or with water when the use of Nox-Crete Solvent F (acetone) is not possible. Designed to be applied in one or more applications depending upon desired color intensity, to diamond polished concrete floors. **Duro-Color** penetrates deep and chemically reacts with concrete to form a color-locking bond to minimize fading and reduce migration of dye particles. **Duro-Color** delivers vibrant color to interior concrete floors and is part of the **Duro-Floor Color System** of products including a liquid floor hardener/densifier and gloss enhancing polish and stain protectant.

2 Liquid Floor Hardener/Densifier

Duro-Nox HSC is an advanced liquid hardener and densifier that is integral to the **Duro-Floor Color System**. Deeply penetrates the micropores and capillaries of concrete surfaces, chemically reacting with free lime to form durable calcium silicate hydrate. This process locks in the **Duro-Color** dye and densifies, hardens, and seals the concrete, providing permanent protection that will never peel, flake, chip, or scrape away. **Duro-Nox HSC** is part of the **Duro-Floor Color System** of products that includes a concentrated dye and gloss enhancing polish and stain protectant.

3 Gloss Enhancer and Stain Protectant

Duro-Shield is a slip resistant, gloss enhancing polish, stain and UV protectant that protects dyed concrete floor surfaces from stains and fading while giving the surface an ultra-high gloss finish. The small molecular size as well as low molecular weight of **Duro-Shield** allows deep penetration, providing a very hard, high gloss, non-slip and stain resistant finish. Contains unique stain blocking additives that chemically bond and penetrate concrete micro-pores, providing long-lasting stain resistance to most inorganic as well as organic contaminants found in food stores, restaurants, offices and warehouses.

- Contains powerful UV inhibitors that protect **Duro-Color** dyes from fading caused by indirect sunlight exposure, ensuring long-lasting color on dyed floors
- Includes Teflon® additive for slip resistance
- Provides 24-hour stain protection to common stain-causing agents
- Treated floors exhibit exceptional gloss
- Safe-to-use, water-based, low-odor, no fumes
- Requires no buffing, resists scuffing and scratching, and retains a high gloss appearance for many years

Built to Handle Everyday Spills in High-Traffic Environments

Duro-Shield protects burnished and dyed concrete floors from the most common staining agents found in grocery, retail, school, showroom, and office environments. Its advanced formula slows penetration, giving crews time to clean spills before permanent staining occurs.

Without Protection:

- Stains set quickly in porous concrete
- Frequent deep cleaning required
- Dull, inconsistent appearance over time

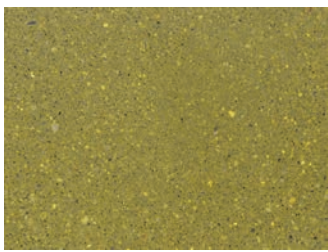
With Duro-Shield:

- Slows stain penetration
- Simplifies routine maintenance
- Maintains a clean, uniform finish

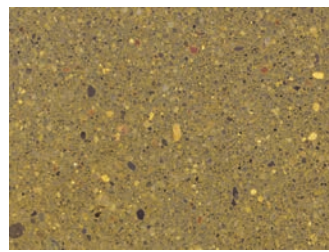
Duro-Shield protects against everyday staining in the environments where floors are constantly on display.



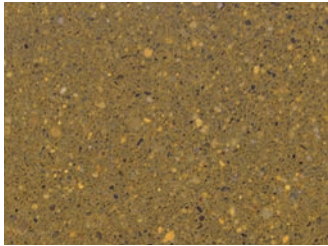
Color Chart



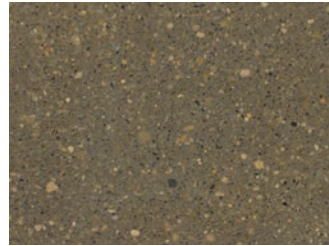
Burnt Yellow



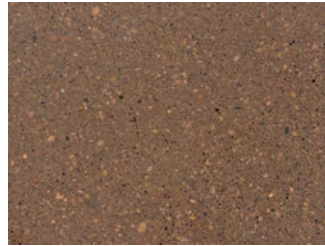
Antique Gold



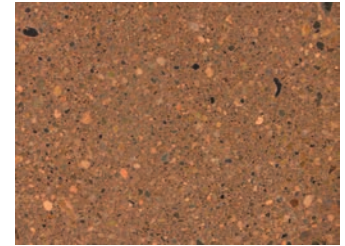
Buckskin



Tobacco Brown



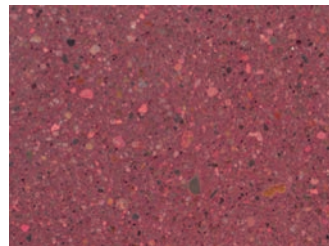
Auburn



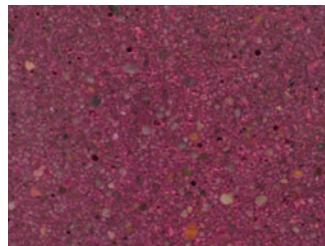
Aztec



Sundried Tomato



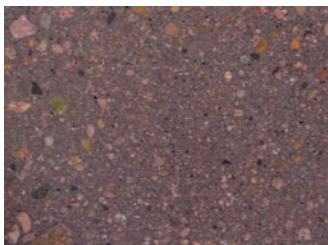
Elderberry



Shocking Fuchsia



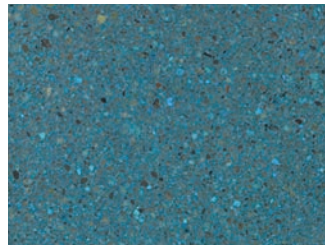
Wine



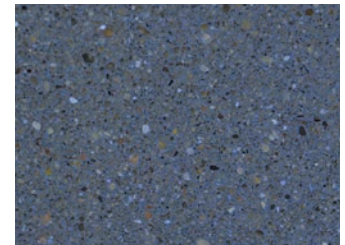
Pomegranate



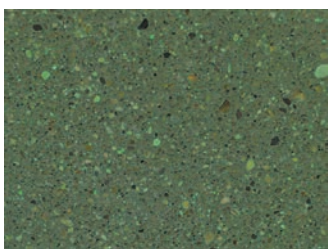
Plum



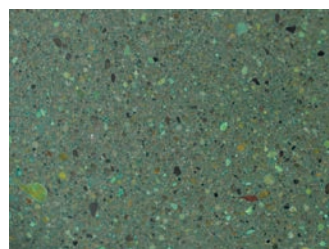
Coral Blue



Royal Blue



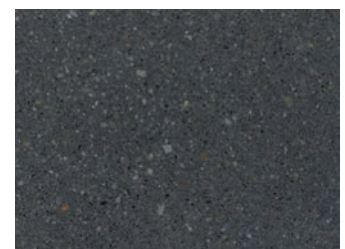
Celery



Hemlock



Slate



Ink Black

DURO-FLOORTM COLOR SYSTEM FOR POLISHED CONCRETE FLOORS

Colors represented are photographs of **Duro-Color** dyes applied to gray concrete and may vary from actual colors.

