

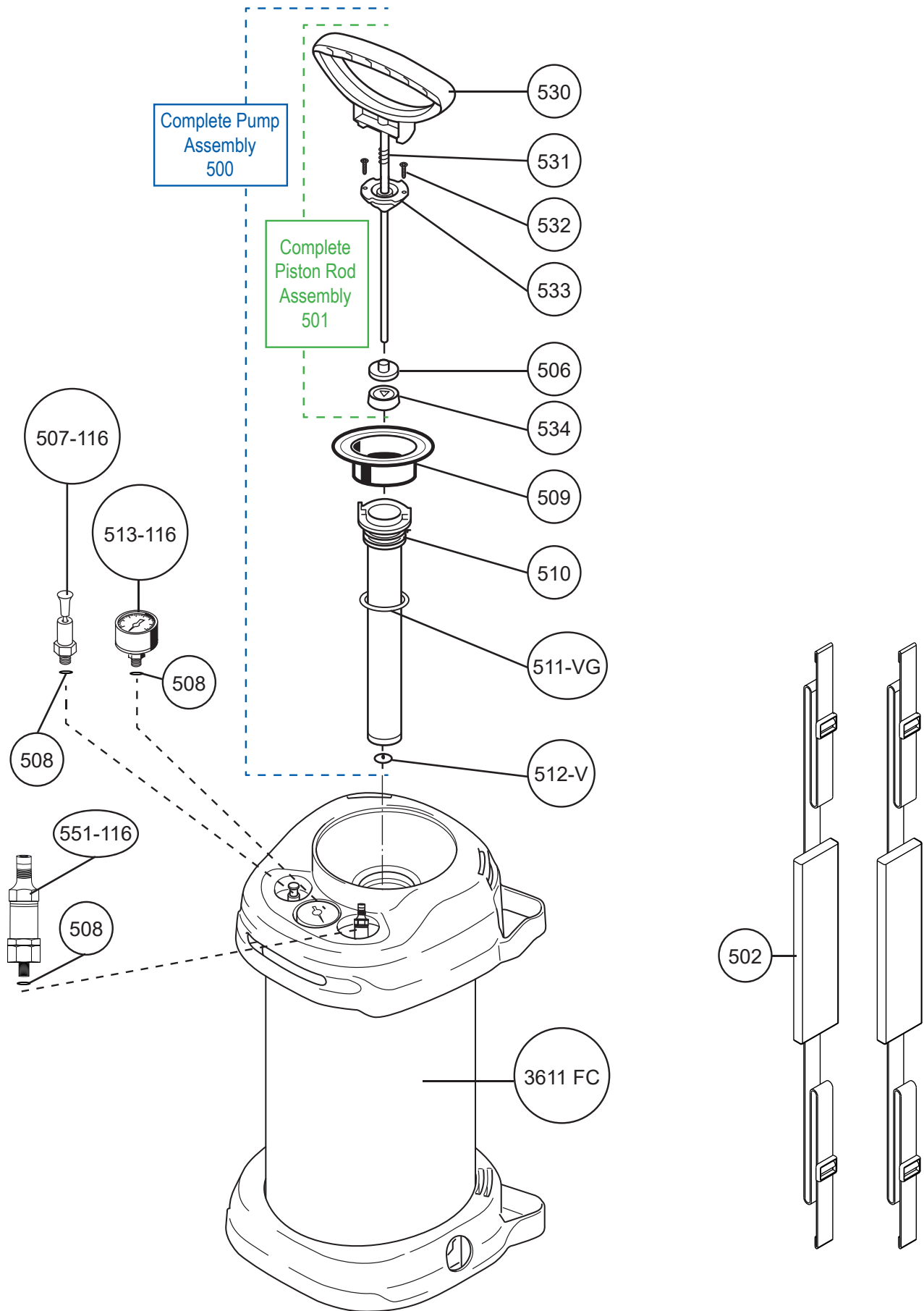
# SCHEMATICS & PARTS LIST

## PERFECT SPRAYER PS-116

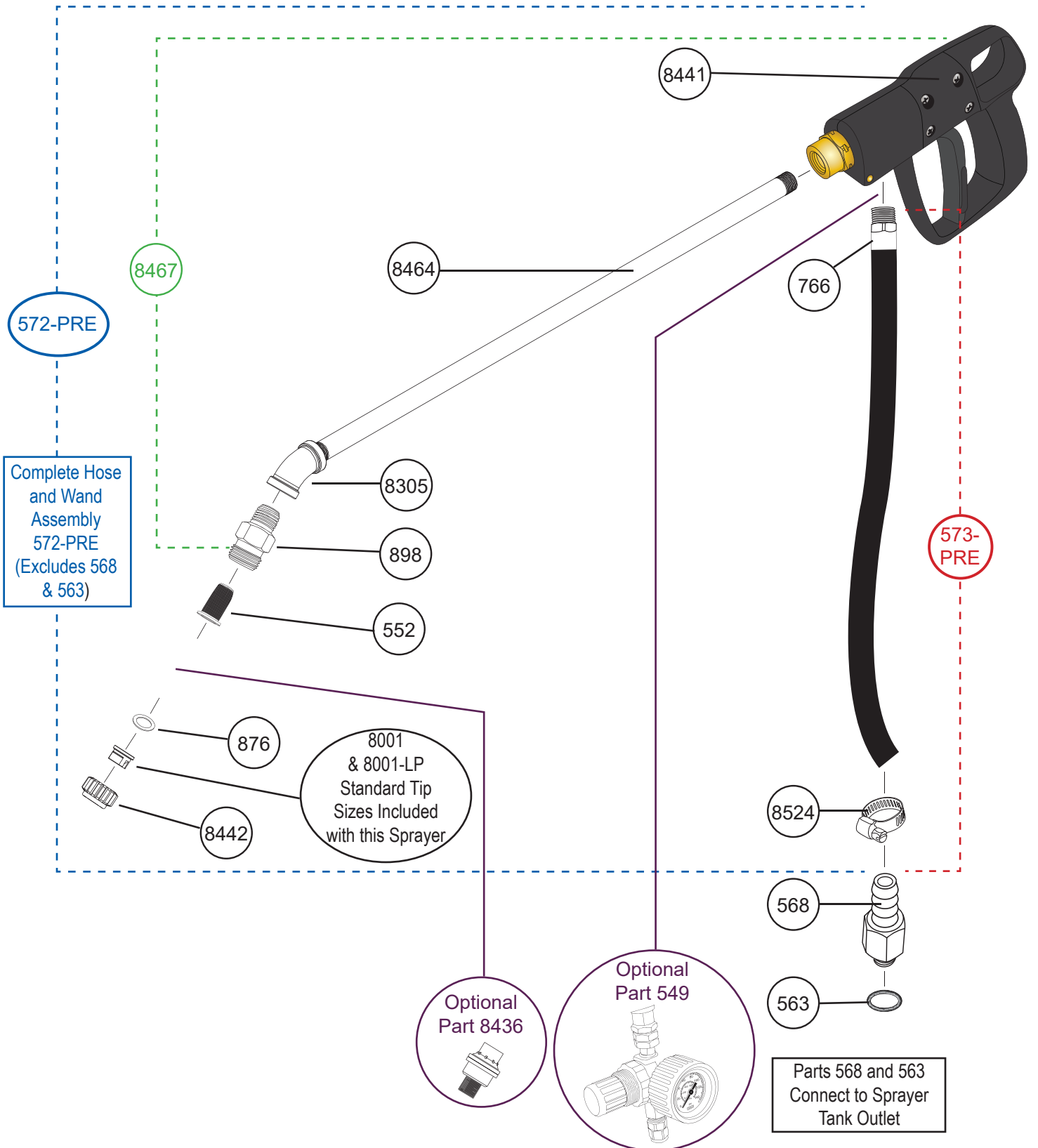


chemical solutions to concrete problems

# SCHEMATICS & PARTS LIST Perfect Sprayer



# SCHEMATICS & PARTS LIST Perfect Sprayer



# SCHEMATICS & PARTS LIST Perfect Sprayer

<b>Part #</b>	<b>Product Description - TANK ASSEMBLY</b>
500	COMPLETE PUMP ASSEMBLY
501	COMPLETE PISTON ROD ASSEMBLY
502	ONE SHOULDER STRAP
506	PISTON BACKING WASHER
507-116	PRESSURE RELIEF/SAFETY VALVE & GASKET 116 PSI
508	GASKET
509	FUNNEL COVER
510	PUMP CYLINDER
511-VG	GREEN VITON PUMP CYLINDER O-RING
512-V	GREEN VITON PUMP CYLINDER FOOT VALVE
513-116	PRESSURE GAUGE 116 PSI
530	PUMP HANDLE & PISTON ROD
531	PUMP HANDLE SPRING
532	ONE CYLINDER CAP SCREW
533	CYLINDER CAP
534	PISTON
551-116	AIR COMPRESSOR FILL VALVE 116 PSI COMPLETE ASSEMBLY
3611FC	STAINLESS STEEL TANK (INCLUDES PRESSURE GAUGE, PRESSURE RELIEF/SAFETY VALVE AND AIR COMPRESSOR FILL VALVE)
<b>Part #</b>	<b>Product Description - OPTIONAL PARTS</b>
549	PRESSURE REGULATOR
800067	800067 SPRAY TIP
80015-LP	80015-LP SPRAY TIP
8002-LP	8002-LP SPRAY TIP
8003-LP	8003-LP SPRAY TIP
T6W	T6W HOLLOW CONE SPRAY TIP (ORANGE)
T8W	T8W HOLLOW CONE SPRAY TIP (GREEN)
8436	GREEN/BLUE CF VALVE (40 PSI)

<b>Part #</b>	<b>Product Description - HOSE/WAND ASSEMBLY</b>
552	GREEN 100 MESH WAND STRAINER
563	TEFLON O-RING FOR TANK/HOSE FITTING
568	TANK/HOSE FITTING
572-PRE	COMPLETE HOSE, SHUT OFF, WAND ASSEMBLY EXCLUDES PARTS 563 & 568
573-PRE	HOSE ASSEMBLY
766	HOSE FERRULE
876	NYLON TIP GASKET
898	STRAINER HOUSING
8001	SPRAY TIP
8001-LP	8001-LP SPRAY TIP
8305	45 DEGREE STAINLESS STEEL ELBOW
8441	PISTOL GRIP SHUT-OFF POLY HOUSING
8442	PLASTIC TIP RETAINER CAP
8464	18" STAINLESS STEEL WAND
8467	PERFECT SHUT-OFF/WAND ASSEMBLY
8524	HOSE CLAMP

## Notice to Users

- This sprayer is designed for Nox-Crete products only.
- Do not use sprayer with flammable products.
- This sprayer is designed only for use in exterior applications. If used indoors, verify that product can be safely sprayed in an interior environment, adequate ventilation is available and appropriate worker safety gear is utilized (see Nox-Crete SDS).
- Spray tips may vary depending on Nox-Crete product. Refer to Nox-Crete Spray Tip Recommendation Guide.
- Improper use can result in explosive failure with potentially serious injuries.
- Do not leave pressurized sprayer unattended in the hot sun. Heat can cause pressure buildup
- Do not store chemicals in sprayer. Empty and clean sprayer after each use.
- Always wear goggles, rubber gloves, rubber boots, and protective clothing when spraying. If air concentrations exceed the OSHA established TLV for chemical being sprayed, suitable respiratory protection is required.
- Never use any tool to remove lid if there is pressure in the sprayer.
- Do not attempt to modify or repair this sprayer except with original manufacturer's parts.
- Routinely inspect sprayer before each use for signs of wear or damage.
- Replace worn or damaged parts before use.
- When filling tank with compressed air, always observe the pressure gauge to ensure the maximum spraying pressure is not exceeded.
- When pressurizing the sprayer, hold the sprayer off to the side. Do not stand with your head or body directly over the sprayer.
- Do not pressurize over 116 psi/800 kPa.

## Maintenance Instructions

- Empty contents of sprayer at the end of each day and clean with the appropriate cleaning solutions ( see Nox-Crete Cleaning Solutions Guide). Leave lid loose on clean sprayer to allow tank to air dry.
- If 100 mesh wand strainer becomes plugged, remove and wash out with appropriate solvent and/or blow clean with compressed air.

## Warranty

### NOTICE-READ CAREFULLY

### CONDITIONS OF SALE

NOX-CRETE offers this product for sale subject to, and Buyer and all users are deemed to have accepted, the following conditions of sale and limited warranty which may only be varied by written agreement of a duly authorized corporate officer of NOX-CRETE. No other representative of or for NOX-CRETE is authorized to grant any warranty or to waive limitation of liability set forth below.

### WARRANTY LIMITATION

NOX-CRETE warrants this product to be free of manufacturing defects. If the product when purchased was defective and was within use period indicated on container or carton, when used, NOX-CRETE will replace the defective product with new product without charge to the purchaser.

NOX-CRETE makes NO OTHER WARRANTY, either express or implied, concerning this product. There is NO WARRANTY OF MERCHANTABILITY. In no case shall NOX-CRETE be liable for special, indirect or consequential damages resulting from the use or handling of the product, and no claim of any kind shall be greater in amount than the purchase price of the product in respect of which damages are claimed.

### INHERENT RISKS

NOX-CRETE MAKES NO WARRANTY WITH RESPECT TO THE PERFORMANCE OF THE PRODUCT AFTER IT IS APPLIED BY THE PURCHASER, AND PURCHASER ASSUMES ALL RISKS ASSOCIATED WITH THE USE OR APPLICATION OF THE PRODUCT.



# Recommended Nox-Crete Cleaning Products



chemical solutions to concrete problems

DESCRIPTION	WATER	SOLVENT B	SOLVENT E	BIO-CLEAN PLUS	COMMENTS
ACRYL-PEN		X	X		
ALUMI-CON	X	X	X		Use Solvent B or E to remove all dried residue
ALUMINOX R (All Versions)		X	X		
BIO-NOX	X	X	X		Use Solvent B or E to remove all dried residue
BLAST-OFF (All dilution ratios)	X				
BLAST-OFF NEUTRALIZER	X				
BRO-CURE	X				
CHEMBETON (All Versions)		X			
CHROMA-TINT		X	X		
CITY-CURE	X				
CLEAN RELEASE (All Versions)		X			
CLEAR-CURE DH 100	X	X	X		Use Solvent B or E to remove all dried residue
CRETE-NOX TA	X				
CURE & SEAL 1200 E	X	X	X		Use Solvent B or E to remove all dried residue
CURE & SEAL 1315 A (All Versions)		X			
CURE & SEAL 150 E	X	X	X		Use Solvent B or E to remove all dried residue
CURE & SEAL 250 E (All Versions)	X	X	X		Use Solvent B or E to remove all dried residue
CURE & SEAL 309		X	X		Local VOC regulations dictate which solvent to use
CURE & SEAL HIGH GLOSS - 100			X		
CURE & SEAL LOW GLOSS - 100			X		
DEACTIVATOR		X	X		
DRYCAST RELEASE		X	X		
DURO-GUARD	X	X	X		Use Solvent B or E to remove all dried residue
DURO-NOX	X				
DURO-NOX HS	X				
DURO-NOX HSC	X				
DURO-NOX LS	X				
DURO-NOX LSC	X				
DURO-POLISH	X	X	X		Use Solvent B or E to remove all dried residue
DURO-POLISH PLUS	X	X	X		Use Solvent B or E to remove all dried residue
DURO-SHIELD	X	X	X		Use Solvent B or E to remove all dried residue
EDGE-FLEX	X	X	X		Use Solvent B or E to remove all dried residue
FOAM RELEASE	X				
FORM-ARMOR		X		X	Use Solvent B for application equipment cleanup and Bio-Clean Plus for removal of applied films
FORM-CLEAN		X	X		
FORM COATING 50		X	X		
FORM COATING 100		X	X		
FORM COATING 250		X	X		
FORM COATING 450		X	X		
FORM COATING E	X	X	X		Use Solvent B or E to remove all dried residue
FORM RELEASE	X				

# Recommended Nox-Crete Cleaning Products


DESCRIPTION	WATER	SOLVENT B	SOLVENT E	BIO-CLEAN PLUS	COMMENTS
HARBETON	X				
HYDROCURE	X				
KEM-EX-IT PLUS	X				
MONOFILM	X				
NATRASEAL		X	X		Local VOC regulations dictate which solvent to use
NOX-CARB		X	X		
NOX-CRETE PCE	X	X	X		Use Solvent B or E to remove all dried residue
PALLET-NOX 100	X				
PRECAST RELEASE #80 250		X	X		
PRECAST RELEASE #80 450		X	X		
PRECAST RELEASE EL		X	X		
PRO-RELEASE 3.0	X	X	X		Use Solvent B or E to remove all dried residue
QUICK RELEASE (All versions)		X	X		
RELEASE AGENT #10 100/250/450		X	X		
RELEASE AGENT #10 B 450		X	X		
RELEASE AGENT #10 E	X	X	X		Use Solvent B or E to remove all dried residue
RES-CURE DH 100	X	X	X		Use Solvent B or E to remove all dried residue
RES-CURE DS	X	X	X		Use Solvent B or E to remove all dried residue
SEASONOX	X				
SEASONOX EXT	X				
SILCOSEAL 2000 F	X	X	X		Use Solvent B or E to remove all dried residue
SILCOSEAL ADVANTAGE	X	X	X		Use Solvent B or E to remove all dried residue
SILCOSEAL ADVANTAGE LVOC	X	X	X		Use Solvent B or E to remove all dried residue
SILCOSEAL CLASSIC (All versions)		X			
SILCOSEAL EX		X	X		Local VOC regulations dictate which solvent to use
SILCOSEAL SELECT	X				Use Solvent B or E to remove all dried residue
SPARKL-SEAL 100			X		
SPARKL-SEAL 350		X	X		
SPARKL-SEAL 700		X	X		
SPARKL-SEAL E	X	X	X		Use Solvent B or E to remove all dried residue
STAGE 1	X				
STIFEL 40 - 600		X	X		Local VOC regulations dictate which solvent to use
STIFEL 40 - 400		X	X		Local VOC regulations dictate which solvent to use
STIFEL GC	X	X	X		Use Solvent B or E to remove all dried residue
STIFEL SC	X	X	X		Use Solvent B or E to remove all dried residue
STIFEL VC	X	X	X		Use Solvent B or E to remove all dried residue
TRI-SHIELD 100			X		
TRI-SHIELD 350		X	X		Local VOC regulations dictate which solvent to use
TRUEHUE		X	X		
UTILITY RELEASE (All dilution ratios)	X	X	X		Use Solvent B or E to remove all dried residue
VERSACRYL	X	X	X		Use Solvent B or E to remove all dried residue
WEATHER-SIL	X	X	X		Use Solvent B or E to remove all dried residue
WEATHER-SIL EXTREME	X	X	X		Use Solvent B or E to remove all dried residue


LEGEND	
<b>Absorptive</b>	BB, MDO, w/m HDO, etc.
<b>Non-Absorptive</b>	Steel, Aluminum, plastic, HDO, PSF, CBF, wood forms coated with Preform HB, Preform 100 and clear preform.
<b>LP</b>	Low Pressure
<b>For Windy Conditions</b>	As noted use one tip size larger. For example, if its recommended to use 8002 LP and it is windy, then use an 8003 LP.
*	Water based product, keep from freezing. Can not be applied below 35° F
**	Not recommended

Spray Tip	Orifice Size in Inches	Spray Angle at Rated Output Pressure	Spray Output in GPM @ 40 psi	Spray Output in GPM @ 60 psi
80005	0.018	80°	0.05	0.06
800067	0.021	80°	0.067	0.08
8001	0.026	80°	0.10	0.12
8001 LP	0.032	80°	0.16	0.20
80015 LP	0.04	80°	0.24	0.30
8002 LP	0.047	80°	0.33	0.43
8003 LP	0.057	80°	0.49	0.63
8004 LP	0.066	80°	0.65	0.81
8005 LP	0.074	80°	0.82	1.05
8006 LP	0.081	80°	0.98	1.24


Product Name	Technical Support: (800) 669-2738 (402) 341-2080	Temperatures 0° to 35°F (-18° to 2°C)		Temperatures Above 35°F (2°C)	
		Spray Tip Size	Recommended Spray Pressure	Spray Tip Size	Recommended Spray Pressure
<b>FORM RELEASE AGENTS</b>					
Alumi-Con (Diluted 3:1)	Absorptive or Surface with Concrete Build-Up	*	*	8002 LP	40 PSI
Alumi-Con (Diluted 6:1)	Non-Absorptive	*	*	8001 LP	40 PSI
Alumi-Nox R 250	Non-Absorptive	8002 LP	40 PSI	8001 LP	40 PSI
Alumi-Nox R 450	Non-Absorptive	8002 LP	40 PSI	8001 LP	40 PSI
Bio-Nox	Absorptive	*	*	8001 LP	40 PSI
	Non-Absorptive	*	*	8001, 800067	40 PSI
Chembeton 100	Absorptive	8003 LP	60 PSI	8003 LP	60 PSI
	Non-Absorptive	8002 LP	60 PSI	8002 LP	60 PSI
Chembeton 250	Absorptive	8003 LP	60 PSI	8003 LP	60 PSI
	Non-Absorptive	8002 LP	60 PSI	8002 LP	60 PSI
Chembeton 450	Non-Absorptive	8002 LP	60 PSI	8002 LP	40 PSI
	Absorptive	8003 LP	60 PSI	8003 LP	40 PSI
Clean Release 3	Non-Absorptive	80015 LP, 8002 LP	60 PSI	8001 LP, 80015 LP	60 PSI
	Absorptive	8003 LP	60 PSI	8003 LP	60 PSI
Clean Release 7	Non-Absorptive	80015 LP, 8002 LP	60 PSI	8001 LP, 80015 LP	60 PSI
	Absorptive	8003 LP	60 PSI	8003 LP	60 PSI
Clean Release 10	Non-Absorptive	80015 LP, 8002 LP	60 PSI	8001 LP, 80015 LP	60 PSI
	Absorptive	8003 LP	60 PSI	8003 LP	60 PSI
Dry Cast Release	Non-Absorptive	80015 LP, 8002 LP	60 PSI	8001 LP, 80015 LP	40 PSI
	Absorptive	8003 LP	60 PSI	8003 LP	40 PSI
Nox-Crete Form Coating 100	Non-Absorptive	8001 LP	60 PSI	8001 LP	60 PSI
	Absorptive	80015 LP	60 PSI	80015 LP	60 PSI
Nox-Crete Form Coating 250	Non-Absorptive	8001 LP	60 PSI	8001 LP	40 PSI
	Absorptive	80015 LP	60 PSI	80015 LP	40 PSI
Nox-Crete Form Coating 450	Absorptive	80015 LP	40 PSI	8001 LP	40 PSI
	Non-Absorptive	8001 LP	40 PSI	8001	40 PSI


Note: In windy conditions use one tip size larger

 chemical solutions to concrete problems	<b>Product Name</b> Form Surface or Concrete Finish Type	<b>Technical Support:</b> (800) 669-2738 (402) 341-2080			Note: In windy conditions use one tip size larger		
		Temperatures 0° to 35°F (-18° to 2°C)	Recommended Spray Pressure	Spray Tip Size	Temperatures Above 35°F (2°C)	Recommended Spray Pressure	Spray Tip Size
Nox-Crete Form Coating E	Absorptive	*	*	8001 LP	*	*	40 PSI
Nox-Crete PCE	Non-Absorptive	*	*	8001	*	*	40 PSI
Pallet-Nox 100	Non-Absorptive	*	*	8001	*	*	40 PSI
Precast Release #80 250	Non-Absorptive	8001, 8001 LP	60 PSI	8001, 8001 LP	60 PSI	8001, 8001 LP	40 PSI
Precast Release #80 450	Non-Absorptive	8001, 8001 LP	60 PSI	8001, 8001 LP	60 PSI	8001, 8001 LP	40 PSI
Precast Release #85	Absorptive	8001	60 PSI	8001	60 PSI	8001	40 PSI
Precast Release #90	Non-Absorptive	8001, 8001 LP	60 PSI	8001, 8001 LP	60 PSI	8001, 8001 LP	40 PSI
Pro-Release 3.0	Absorptive	*	*	8003 LP	*	8003 LP	40 PSI
Quick Release 3 - 100	Non-Absorptive	*	*	8002 LP	*	8002 LP	40 PSI
Quick Release 3 - 250	Absorptive	8003 LP	60 PSI	8003 LP	60 PSI	8003 LP	60 PSI
Quick Release 5 - 100	Non-Absorptive	8002 LP	60 PSI	8002 LP	60 PSI	8002 LP	60 PSI
Quick Release 5 - 250	Absorptive	8003 LP	60 PSI	8003 LP	60 PSI	8003 LP	60 PSI
Quick Release 7 - 250	Non-Absorptive	8002 LP	60 PSI	8002 LP	60 PSI	8002 LP	60 PSI
Release Agent #10 100	Absorptive	80015 LP	60 PSI	80015 LP	60 PSI	80015 LP	60 PSI
Release Agent #10 250	Non-Absorptive	8001 LP	60 PSI	8001 LP	60 PSI	8001 LP	60 PSI
Release Agent #10 450	Non-Absorptive	8001 LP	40 PSI	8001 LP	40 PSI	8001 LP	40 PSI
Release Agent #10 E	Non-Absorptive	8001	60 PSI	8001, 8001 LP	60 PSI	8001, 8001 LP	60 PSI
Utility Release (Diluted 2:1)	Absorptive	8001 LP, 80015 LP	40 PSI	80015 LP	40 PSI	80015 LP	40 PSI
Utility Release (Diluted 7:1)	Absorptive	8001 LP, 80015 LP	60 PSI	8001 LP, 80015 LP	60 PSI	8001 LP, 80015 LP	40 PSI
Utility Release (Diluted 2:1)	Non-Absorptive	8001, 8001 LP	60 PSI	8001, 8001 LP	60 PSI	8001, 8001 LP	40 PSI
Utility Release (Diluted 7:1)	Non-Absorptive	8001 LP, 80015 LP	60 PSI	8001 LP, 80015 LP	60 PSI	8001 LP, 80015 LP	40 PSI
Utility Release (Diluted 2:1)	Surface with Concrete Build-Up	8001, 8001 LP	60 PSI	8001, 8001 LP	60 PSI	8001, 8001 LP	40 PSI
Utility Release (Diluted 7:1)	Non-Absorptive	*	*	8003 LP	*	8003 LP	40 PSI
Utility Release (Diluted 7:1)	Absorptive	*	*	8002 LP	*	8002 LP	40 PSI
Utility Release (Diluted 7:1)	Absorptive	*	*	8003 LP	*	8003 LP	40 PSI

 chemical solutions to concrete problems Product Name	Technical Support: (800) 669-2738 (402) 341-2080 Form Surface or Concrete Finish Type	Temperatures 0° to 35°F (-18° to 2°C)		Temperatures Above 35°F (2°C)	
		Spray Tip Size	Recommended Spray Pressure	Spray Tip Size	Recommended Spray Pressure
<b>CURING COMPOUNDS, CURE &amp; SEALS</b>					
Bro-Cure	Troweled	*	*	8004 LP	40 PSI
City Cure - WW	Broom/Irregular	*	*	8005 LP	40 PSI
Clear Cure DH 100	Broom	*	*	8006 LP	40 PSI
Cure & Seal 100E	Troweled	*	*	8005 LP	40 PSI
Cure & Seal 150E	Broom/Irregular	*	*	8006 LP	40 PSI
Cure & Seal 250E	Troweled, Formed	*	*	8005 LP	40 PSI
Cure & Seal 309	Broom	*	*	8006 LP	40 PSI
Cure & Seal 1200E	Troweled, Formed	*	*	8005 LP	40 PSI
Cure & Seal 1315A 700	Broom, Etched, Exposed Aggregate	**	**	8004 LP	60 PSI
Cure & Seal 1315A 350	Troweled, Formed, Stamped	**	**	8005 LP	60 PSI
Cure & Seal High-Gloss - 100	Broom, Etched, Exposed Aggregate	**	**	8004 LP	60 PSI
Cure & Seal Low-Gloss - 100	Troweled, Formed, Stamped	**	**	8005 LP	60 PSI
HydroCure	Broom/Irregular	**	**	8005 LP	60 PSI
Res-Cure DH	Broom/Irregular	*	*	8005 LP	40 PSI
Res-Cure DS	Troweled	*	*	8006 LP	40 PSI
	Broom/Irregular	*	*	8006 LP	40 PSI

Note: In windy conditions use one tip size larger

 chemical solutions to concrete problems	Technical Support: (800) 669-2738 (402) 341-2080		Note: In windy conditions use one tip size larger Temperatures 0° to 35°F (-18° to 2°C)		Temperatures Above 35°F (2°C)	
	Product Name	Form Surface or Concrete Finish Type	Spray Tip Size	Recommended Spray Pressure	Spray Tip Size	Recommended Spray Pressure
<b>DECORATIVE SEALERS</b>						
Chroma-Tint	All Surfaces	**	**	8005 LP	60 PSI	
Natraseal	Troweled, Formed, Stamped	**	**	8004 LP	40 PSI	
	Broom, Etched, Exposed Aggregate	**	**	8005 LP	40 PSI	
Tri-Shield - 100	Troweled, Formed, Stamped	**	**	8004 LP	40 PSI	
	Broom, Etched, Exposed Aggregate	**	**	8005 LP	40 PSI	
Tri-Shield - 350	Troweled, Formed, Stamped	**	**	8004 LP	40 PSI	
	Broom, Etched, Exposed Aggregate	**	**	8005 LP	40 PSI	
Sparkl-Seal 700	Troweled, Formed, Stamped	**	**	8004 LP	60 PSI	
	Broom, Etched, Exposed Aggregate	**	**	8005 LP	60 PSI	
Sparkl-Seal E	Troweled, Formed, Stamped	*	*	8004 LP	40 PSI	
	Broom, Etched, Exposed Aggregate	*	*	8005 LP	40 PSI	
Sparkl-Seal 350	Troweled, Formed, Stamped	**	**	8004 LP	60 PSI	
	Broom, Etched, Exposed Aggregate	**	**	8005 LP	60 PSI	
Stamp Release	Stamped	**	**	8003 LP	40 PSI	
TrueHue	All Surfaces	**	**	8001 LP	40 PSI	
<b>WATER REPELLANTS</b>						
Stifel 40-600	Troweled, Formed, Stamped	**	**	8004 LP	40 PSI	
	Broom, Etched, Exposed Aggregate	**	**	8006 LP	40 PSI	
Stifel 40-400	Troweled, Formed, Stamped	**	**	8004 LP	40 PSI	
	Broom, Etched, Exposed Aggregate	*	*	8006 LP	40 PSI	
Stifel GC	Troweled, Formed, Stamped	*	*	8004 LP	40 PSI	
	Broom, Etched, Exposed Aggregate	*	*	8006 LP	40 PSI	
Stifel SC	Troweled, Formed, Stamped	*	*	8004 LP	40 PSI	
	Broom, Etched, Exposed Aggregate	*	*	8006 LP	40 PSI	
Stifel V/C	Troweled, Formed, Stamped	*	*	8003 LP	40 PSI	
	Broom, Etched, Exposed Aggregate	*	*	8005 LP	40 PSI	
Weather-Sil	Troweled, Formed, Stamped	*	*	8004 LP	40 PSI	
	Broom, Etched, Exposed Aggregate	*	*	8006 LP	40 PSI	
Weather-Sil Extreme	Troweled, Formed, Stamped	*	*	8005 LP	40 PSI	
	Broom, Etched, Exposed Aggregate	*	*	8006 LP	40 PSI	

 chemical solutions to concrete problems	Technical Support: (800) 669-2738 (402) 341-2080		Note: In windy conditions use one tip size larger Temperatures 0° to 35°F (-18° to 2°C)		Temperatures Above 35°F (2°C)	
	Product Name	Form Surface or Concrete Finish Type	Spray Tip Size	Recommended Spray Pressure	Spray Tip Size	Recommended Spray Pressure
<b>TILT-UP BONDBREAKERS</b>						
Silcoseal 2000F	Troweled	*	*	*	8003 LP, 8004 LP, 8005 LP	40 PSI
Silcoseal Advantage	Troweled	*	*	*	8003 LP, 8004 LP, 8005 LP	40 PSI
Silcoseal Classic	Troweled	**	**	**	8003 LP, 8004 LP, 8005 LP	40 PSI
Silcoseal EX	Troweled	**	**	**	8003 LP, 8004 LP, 8005 LP	40 PSI
Silcoseal Select	Troweled	*	*	*	8003 LP, 8004 LP, 8005 LP	40 PSI
<b>FLOOR DENSIFIERS / HARDENER</b>						
Duro-Guard	Troweled	*	*	*	8001 LP	40 PSI
Duro-Nox	Troweled	*	*	*	8004 LP, 8005 LP	40 PSI
Duro-Nox HS	Troweled	*	*	*	8002 LP, 8003 LP	40 PSI
Duro-Nox HSC	Troweled	*	*	*	8003 LP, 8004 LP	40 PSI
Duro-Nox LS	Troweled	*	*	*	8002 LP, 8003 LP	40 PSI
Duro-Nox LSC	Troweled	*	*	*	8003 LP, 8004 LP	40 PSI
Duro-Polish	Troweled	*	*	*	8001 LP	40 PSI
Duro-Polish Plus	Troweled	*	*	*	8001 LP	40 PSI
Duro-Shield	Troweled	*	*	*	8001 LP	40 PSI
Harbison (All dilution rates)	All Troweled & Exposed Surfaces	*	*	*	8004 LP, 8005 LP	40 PSI
<b>MAINTENANCE &amp; PROTECTION FOR FORMS &amp; EQUIPMENT</b>						
Deactivator	All Surfaces	8004 LP	60 PSI		8002 LP, 8003 LP	60 PSI
Form Clean 250	Surface with Concrete Build-Up	8002 LP, 8003 LP	60 PSI		8002 LP, 8003 LP	60 PSI
Form Clean 450	Surface with Concrete Build-Up	8002 LP, 8003 LP	60 PSI		8002 LP, 8003 LP	60 PSI
Seasonox	All Clean, Cold Rolled Aluminum Surfaces	*	*	*	8005 LP, 8006 LP	40 PSI
Seasonox EXT	All Clean, Extruded Aluminum Surfaces	*	*	*	8003 LP, 8004LP	60 PSI
<b>EVAPORATION REDUCERS / FINISHING AIDS / SURFACE SET RETARDERS</b>						
Monofilm (Diluted 9:1)	All Surfaces	*	*	*	8004 LP, 8005 LP	40 PSI
Monofilm RTU	All Surfaces	*	*	*	8004 LP, 8005 LP	40 PSI
Stage 1	Float/Troweled	*	*	*	8002 LP	40 PSI
Crete-Nox TA	Float	*	*	*	8005 LP	40 PSI