



chemical solutions to concrete problems



Fast Color.
Custom Looks.
Real Results.
In One Day!

EASY APPLICATION



FAST DRY TIME



STUNNING BEFORE & AFTER RESULTS



DILUTION CONTROLLED OPACITY



BENEFITS

- **Cost-Effective Transformation:** Quickly and affordably turn plain, textured concrete into a custom decorative wearing surface with a unique, eye-catching appearance.
- **Rapid Dry Time:** Dries quickly and can be sealed within hours using a wide range of compatible Nox-Crete sealer options.
- **Unlimited Color Flexibility:** Available in 12 standard colors and easily blended in the field to create virtually unlimited custom color variations.
- **Fade-Resistant Pigments:** Formulated with micronized, ultra-fine inorganic pigments that resist fading, discoloration, and yellowing—even under harsh exterior conditions.
- **Acid-Stain Alternative:** Achieve the look of acid-stained concrete with greater color control and significantly faster application times.
- **Marbleizing Agent (Optional additive):** Create natural-looking, variegated color movement by selectively altering stain absorption, producing a marbled, multi-toned finish with depth and character.



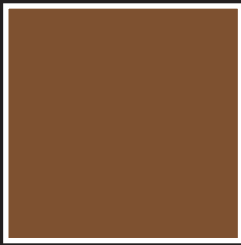
nox-crete.com • 402-341-2080

FOLLOW US

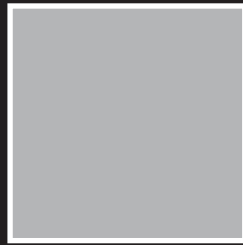


STAIN SELECTION GUIDE

12 standard stains for a variety of color combinations to enhance your decorative space.



SADDLEWOOD



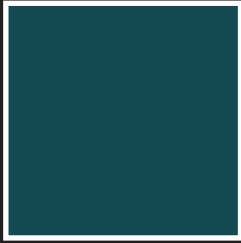
STEELY SLATE



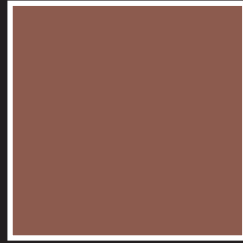
SHARK FIN GRAY



ERWIN KHAKI



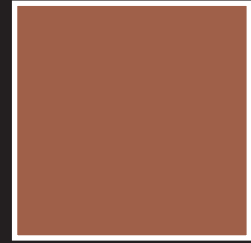
OCEAN WHISPER



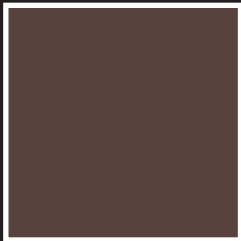
AUTUMN SPICE



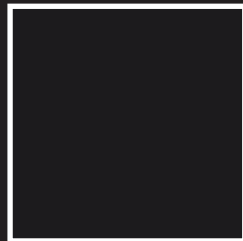
CALIFORNIA CASTLE



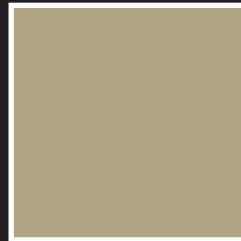
GINGERBREAD



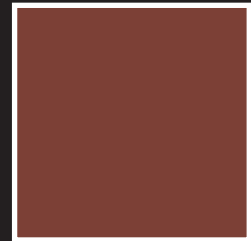
BUFFALO FLEECE



MIDNIGHT VELVET



FARM FRESH EGGSHELL

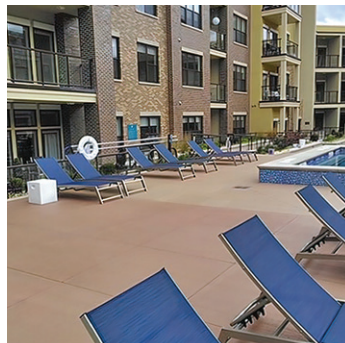
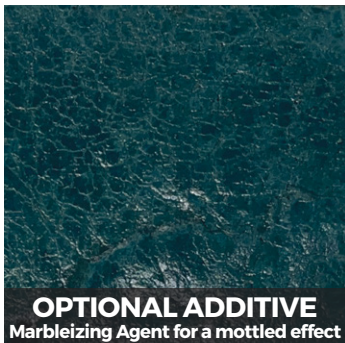


RICH MAHOGANY

*TrueHue swatches aim to closely match the final concrete color, but variations in curing, finishing, texture and dilution ratios can affect the outcome. Although we strive for accuracy, these factors may slightly alter the perceived color of the finished concrete.

Ideal Uses For TrueHue®

- driveways
- walkways
- pool/patio areas
- balconies
- plaza decks
- entryways
- arena concourses
- picnic areas



TrueHue is a concentrated, deep-penetrating concrete stain designed to transform textured surfaces with rich, long-lasting color. Using non-fading inorganic pigments, it creates variegated, marbled, or opaque decorative finishes.

TrueHue can be diluted to achieve anything from translucent to full coverage, and colors can be blended or layered in the field to create completely custom, one-of-a-kind results.

