

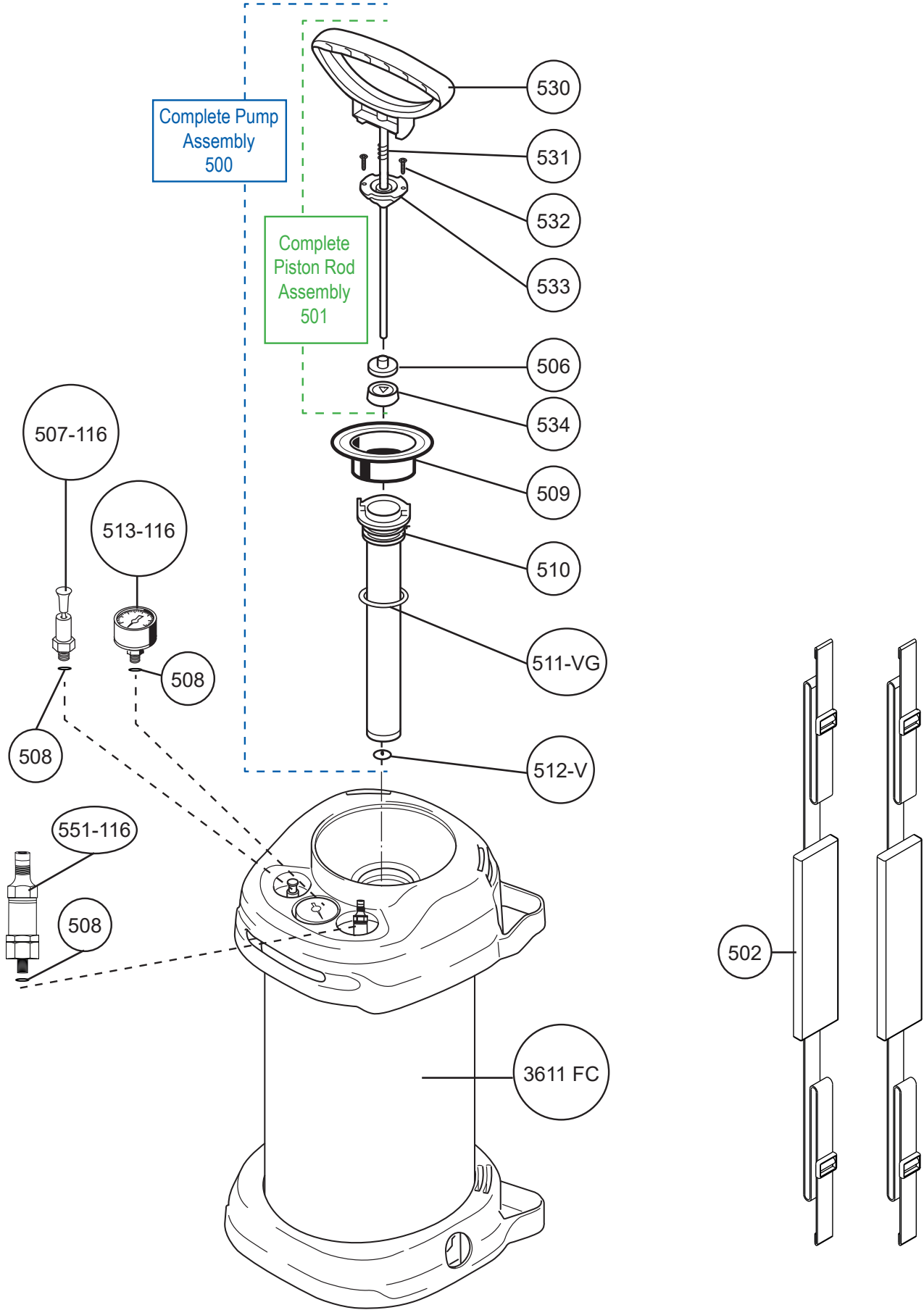
SCHEMATICS & PARTS LIST

PERFECT PRECAST SPRAYER PFCS-PRE

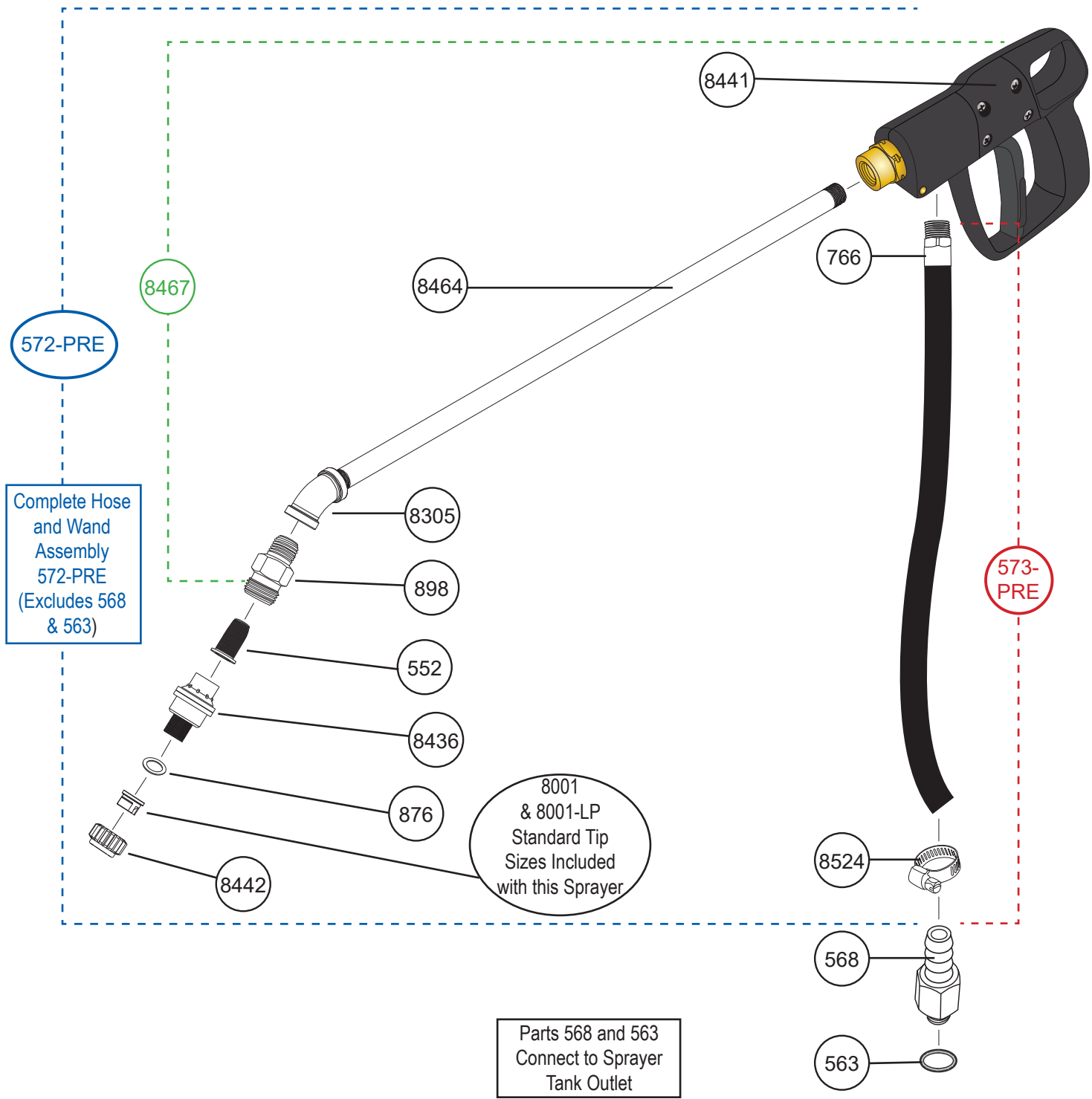


chemical solutions to [concrete](#) problems

SCHEMATICS & PARTS LIST Perfect Precast Sprayer



SCHEMATICS & PARTS LIST Perfect Precast Sprayer



SCHEMATICS & PARTS LIST Perfect Precast Sprayer

Part #	Product Description - TANK ASSEMBLY
500	COMPLETE PUMP ASSEMBLY
501	COMPLETE PISTON ROD ASSEMBLY
502	ONE SHOULDER STRAP
506	PISTON BACKING WASHER
507-116	PRESSURE RELIEF/SAFETY VALVE & GASKET 116 PSI
508	GASKET
509	FUNNEL COVER
510	PUMP CYLINDER
511-VG	GREEN VITON PUMP CYLINDER O-RING
512-V	GREEN VITON PUMP CYLINDER FOOT VALVE
513-116	PRESSURE GAUGE 116 PSI
530	PUMP HANDLE & PISTON ROD
531	PUMP HANDLE SPRING
532	ONE CYLINDER CAP SCREW
533	CYLINDER CAP
534	PISTON
551-116	AIR COMPRESSOR FILL VALVE 116 PSI COMPLETE ASSEMBLY
3611FC	STAINLESS STEEL TANK (INCLUDES PRESSURE GAUGE, PRESSURE RELIEF/SAFETY VALVE AND AIR COMPRESSOR FILL VALVE)
Part #	Product Description - OPTIONAL PARTS
549	PRESSURE REGULATOR
800067	800067 SPRAY TIP
80015-LP	80015-LP SPRAY TIP
8002-LP	8002-LP SPRAY TIP
8003-LP	8003-LP SPRAY TIP
8396	36" STAINLESS STEEL WAND
T6W	T6W HOLLOW CONE SPRAY TIP (ORANGE)
T8W	T8W HOLLOW CONE SPRAY TIP (GREEN)

Part #	Product Description - HOSE/WAND ASSEMBLY
552	GREEN 100 MESH WAND STRAINER
563	TEFLON O-RING FOR TANK/HOSE FITTING
568	TANK/HOSE FITTING
572-PRE	COMPLETE HOSE, SHUT OFF, WAND ASSEMBLY EXCLUDES PARTS 563 & 568
573-PRE	HOSE ASSEMBLY
766	HOSE FERRULE
876	NYLON TIP GASKET
898	STRAINER HOUSING
8001	SPRAY TIP
8001-LP	8001-LP SPRAY TIP
8305	45 DEGREE STAINLESS STEEL ELBOW
8436	GREEN/BLUE CF VALVE (40 PSI)
8441	PISTOL GRIP SHUT-OFF POLY HOUSING
8442	PLASTIC TIP RETAINER CAP
8464	18" STAINLESS STEEL WAND
8467	PERFECT SHUT-OFF/WAND ASSEMBLY
8524	HOSE CLAMP

Notice to Users

- This sprayer is designed for Nox-Crete products only.
- Do not use sprayer with flammable products.
- This sprayer is designed only for use in exterior applications. If used indoors, verify that product can be safely sprayed in an interior environment, adequate ventilation is available and appropriate worker safety gear is utilized (see Nox-Crete SDS).
- Spray tips may vary depending on Nox-Crete product. Refer to Nox-Crete Spray Tip Recommendation Guide.
- Improper use can result in explosive failure with potentially serious injuries.
- Do not leave pressurized sprayer unattended in the hot sun. Heat can cause pressure buildup
- Do not store chemicals in sprayer. Empty and clean sprayer after each use.
- Always wear goggles, rubber gloves, rubber boots, and protective clothing when spraying. If air concentrations exceed the OSHA established TLV for chemical being sprayed, suitable respiratory protection is required.
- Never use any tool to remove lid if there is pressure in the sprayer.
- Do not attempt to modify or repair this sprayer except with original manufacturer's parts.
- Routinely inspect sprayer before each use for signs of wear or damage.
- Replace worn or damaged parts before use.
- When filling tank with compressed air, always observe the pressure gauge to ensure the maximum spraying pressure is not exceeded.
- When pressurizing the sprayer, hold the sprayer off to the side. Do not stand with your head or body directly over the sprayer.
- Do not pressurize over 116 psi/800 kPa.

Maintenance Instructions

- Empty contents of sprayer at the end of each day and clean with the appropriate cleaning solutions (see Nox-Crete Cleaning Solutions Guide). Leave lid loose on clean sprayer to allow tank to air dry.
- If 100 mesh wand strainer becomes plugged, remove and wash out with appropriate solvent and/or blow clean with compressed air.

Warranty

NOTICE-READ CAREFULLY

CONDITIONS OF SALE

NOX-CRETE offers this product for sale subject to, and Buyer and all users are deemed to have accepted, the following conditions of sale and limited warranty which may only be varied by written agreement of a duly authorized corporate officer of NOX-CRETE. No other representative of or for NOX-CRETE is authorized to grant any warranty or to waive limitation of liability set forth below.

WARRANTY LIMITATION

NOX-CRETE warrants this product to be free of manufacturing defects. If the product when purchased was defective and was within use period indicated on container or carton, when used, NOX-CRETE will replace the defective product with new product without charge to the purchaser.

NOX-CRETE makes NO OTHER WARRANTY, either express or implied, concerning this product. There is NO WARRANTY OF MERCHANTABILITY. In no case shall NOX-CRETE be liable for special, indirect or consequential damages resulting from the use or handling of the product, and no claim of any kind shall be greater in amount than the purchase price of the product in respect of which damages are claimed.

INHERENT RISKS

NOX-CRETE MAKES NO WARRANTY WITH RESPECT TO THE PERFORMANCE OF THE PRODUCT AFTER IT IS APPLIED BY THE PURCHASER, AND PURCHASER ASSUMES ALL RISKS ASSOCIATED WITH THE USE OR APPLICATION OF THE PRODUCT.