

SCHEMATICS & PARTS LIST

Perfect Form and Concrete Sprayer (87 PSI)



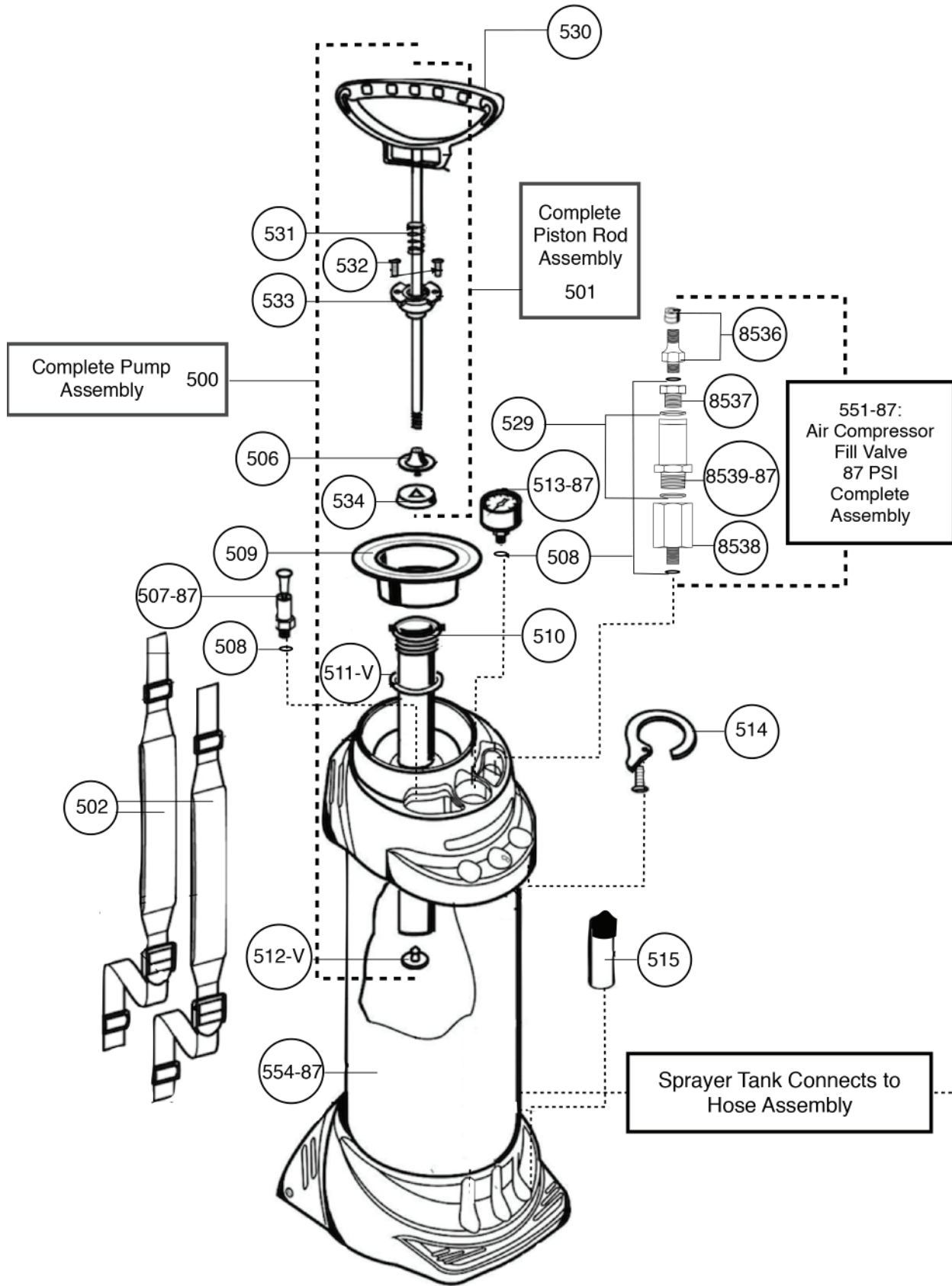
REV 03/2016

402-341-2080 | customerservice@nox-crete.com | www.nox-crete.com

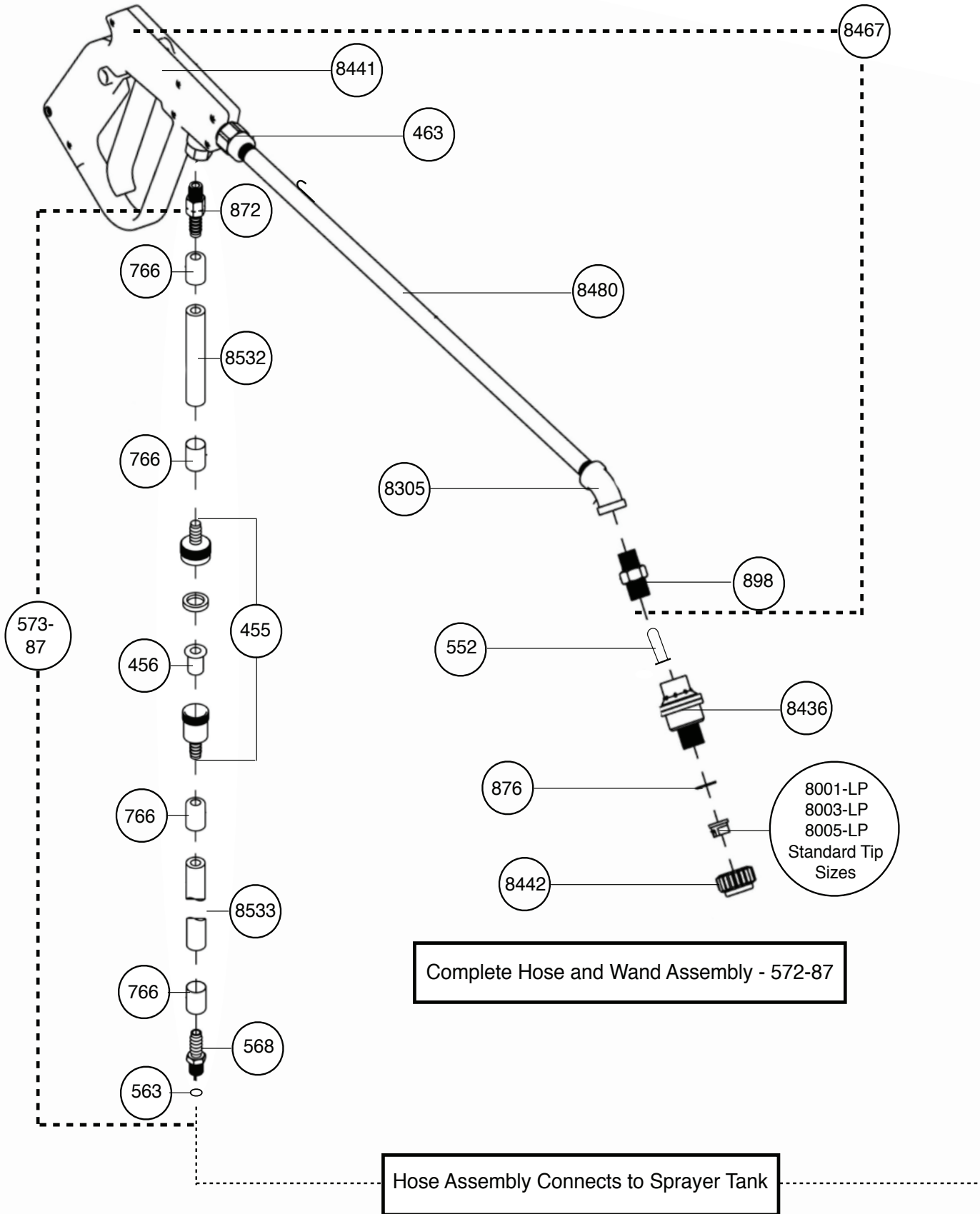


chemical solutions to concrete problems

SCHEMATICS & PARTS LIST Perfect Form and Concrete Sprayer



SCHEMATICS & PARTS LIST Perfect Form and Concrete Sprayer



Complete Hose and Wand Assembly - 572-87

Hose Assembly Connects to Sprayer Tank

SCHEMATICS & PARTS LIST Perfect Form and Concrete Sprayer

Part #	Product Description - TANK ASSEMBLY
500	COMPLETE PUMP ASSEMBLY
501	COMPLETE PISTON ROD ASSEMBLY
502	ONE SHOULDER STRAP
506	PISTON BACKING WASHER
507-87	PRESSURE RELIEF/SAFETY VALVE & GASKET 87 PSI
508	GASKET
509	FUNNEL COVER
510	PUMP CYLINDER
511-V	BLACK VITON PUMP CYLINDER O-RING
512-V	GREEN VITON PUMP CYLINDER FOOT VALVE
513-87	PRESSURE GAUGE 87 PSI
514	PUMP HOLDER
515	SPARE PARTS CONTAINER
529	CLEAR GASKET FOR AIR FILL/CHECK VALVE
530	PUMP HANDLE & PISTON ROD
531	PUMP HANDLE SPRING
532	ONE CYLINDER CAP SCREW (2 REQUIRED)
533	CYLINDER CAP
534	PISTON
551-87	AIR COMPRESSOR FILL VALVE 87 PSI COMPLETE ASSEMBLY
554-87	STAINLESS STEEL TANK 87 PSI
8536	SCHRADER AIR FILL STEM W/CAP
8537	SCHRADER / CHECK VALVE FITTING
8538	CHECK VALVE / TANK FITTING
8539-87	CHECK VALVE 87 PSI (6 BAR)

Part #	Product Description - OPTIONAL PARTS
574	BACKPACK HARNESS
8396	36" WAND
8437	YELLOW/RED CF VALVE (60 PSI)
8502	RED 50 MESH WAND STRAINER
80005	80005 SPRAY TIP
800067	800067 SPRAY TIP
8001	8001 SPRAY TIP
80015-LP	8002-LP SPRAY TIP
8002-LP	8002-LP SPRAY TIP
8004-LP	8004-LP SPRAY TIP
8006-LP	8006-LP SPRAY TIP

Part #	Product Description - HOSE/WAND ASSEMBLY
455	HOSE INLINE FILTER COMPLETE
456	REPLACEMENT FILTER ELEMENT
463	SHUT-OFF/WAND ADAPTER
552	GREEN 100 MESH WAND STRAINER
563	TEFLON O-RING FOR TANK/HOSE FITTING
568	TANK/HOSE FITTING
572-87	COMPLETE HOSE SHUT OFF WAND ASSEMBLY EXCLUDES PARTS 568 & 563
573-87	HOSE AND INLINE FILTER ASSEMBLY
766	HOSE FERULE
872	HOSE/SHUT OFF SWIVEL FITTING
876	NYLON TIP GASKET
898	STRAINER HOUSING
8001-LP	8001-LP SPRAY TIP
8003-LP	8003-LP SPRAY TIP
8005-LP	8005-LP SPRAY TIP
8305	45 DEGREE STEEL ELBOW
8436	GREEN/BLUE CF VALVE (40 PSI)
8441	PISTOL GRIP SHUT-OFF POLY HOUSING
8442	PLASTIC TIP RETAINER CAP
8467	PERFECT SHUT-OFF/WAND ASSEMBLY
8480	18" WAND WITH HANGER
8532	6" HOSE SECTION
8533	4.5' HOSE SECTION



SCHEMATICS & PARTS LIST Perfect Form and Concrete Sprayer

Use Instructions

- Spray tips may vary depending on product. Refer to Spray Tip Recommendation Guide.
- Use Standard Green/Blue CF Valve (40 psi) for water-based products, 450 VOC release agents, and non-LVOC sealers and cure and seals. Use in temperatures above 35°F (2°C).
- Use Optional Yellow/Red CF Valve (60 psi) for 250 and 100 VOC release agents at all temperatures and 450 VOC release agents at temperatures below 35°F (2°C).

Maintenance Instructions

- Empty contents of sprayer at the end of each day and clean with the appropriate cleaning solutions. Leave lid loose on clean sprayer to allow tank to air dry.
- If sponge bronze liquid filter becomes plugged, remove filter and wash out with solvent.

Notice to Users

- This sprayer is designed for Nox-Crete products only.
- This sprayer is designed only for use in exterior applications. If used indoors, verify that product can be safely sprayed in an interior environment, adequate ventilation is available and appropriate worker safety gear is utilized (see Nox-Crete SDS).
- Improper use or failure to follow instructions can result in explosive failure with potentially serious injuries. For safe use of product, you must read and follow all instructions before use
- Do not leave pressurized sprayer unattended in the hot sun. Heat can cause pressure buildup
- Do not store chemicals in sprayer. Empty and clean sprayer after each use.
- Always wear goggles, rubber gloves, rubber boots, and protective clothing when spraying. If air concentrations exceed the OSHA established TLV for chemical being sprayed, suitable respiratory protection is required.
- Never use any tool to remove lid if there is pressure in the sprayer.
- Do not attempt to modify or repair this sprayer except with original manufacturer's parts.
- Routinely inspect sprayer before each use for signs of wear or damage.

- Replace worn or damaged parts before use.
- When filling tank with compressed air, always observe the pressure gauge to ensure the maximum spraying pressure is not exceeded.
- When pressurizing the sprayer, hold the sprayer off to the side. Do not stand with your head or body directly over the sprayer.
- DO NOT PRESSURIZE OVER 87 PSI/6 BAR.

Warranty

NOTICE-READ CAREFULLY CONDITIONS OF SALE

NOX-CRETE offers this product for sale subject to, and Buyer and all users are deemed to have accepted, the following conditions of sale and limited warranty which may only be varied by written agreement of a duly authorized corporate officer of NOX-CRETE. No other representative of or for NOX-CRETE is authorized to grant any warranty or to waive limitation of liability set forth below.

WARRANTY LIMITATION

NOX-CRETE warrants this product to be free of manufacturing defects. If the product when purchased was defective and was within use period indicated on container or carton, when used, NOX-CRETE will replace the defective product with new product without charge to the purchaser.

NOX-CRETE makes NO OTHER WARRANTY, either express or implied, concerning this product. There is NO WARRANTY OF MERCHANTABILITY. In no case shall NOX-CRETE be liable for special, indirect or consequential damages resulting from the use or handling of the product, and no claim of any kind shall be greater in amount than the purchase price of the product in respect of which damages are claimed.

INHERENT RISKS

NOX-CRETE MAKES NO WARRANTY WITH RESPECT TO THE PERFORMANCE OF THE PRODUCT AFTER IT IS APPLIED BY THE PURCHASER, AND PURCHASER ASSUMES ALL RISKS ASSOCIATED WITH THE USE OR APPLICATION OF THE PRODUCT.

Contact Us

Customerservice@nox-crete.com
800-669-2738
402-341-2080

DO NOT USE WITH FLAMMABLE PRODUCTS